



*Decorative  
F47 SAYA*





### Company overview.

Established in 1961 in the Venetian countryside, Fabbian is one of the premiere Italian lighting manufacturers operating in the modern design market, designing and manufacturing lighting fixtures for residential and commercial markets.

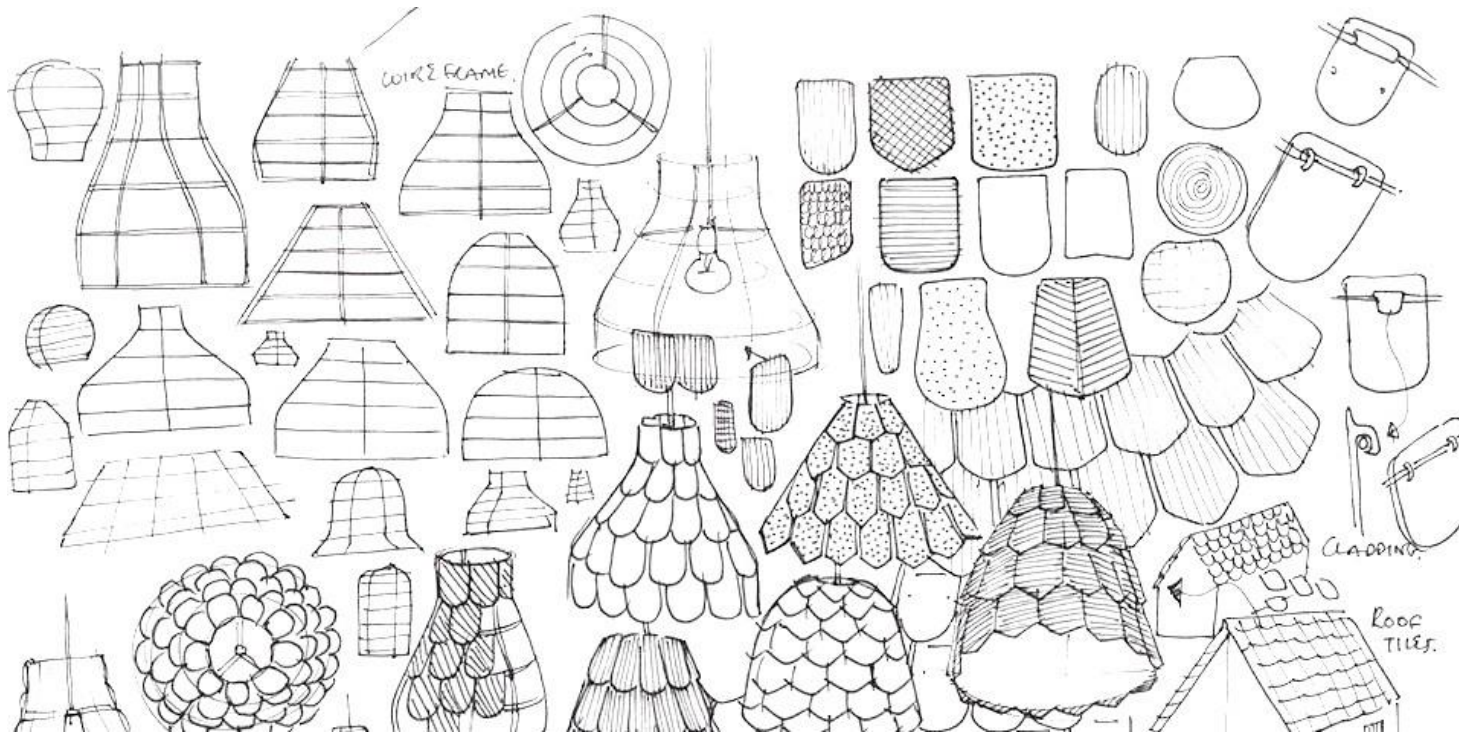
For the North America market, Fabbian USA has an office, with a dedicated sales and service staff, in the world's capital of design, New York City, just blocks from Time Square.



### Company overview.

The endless research on new materials, trends, and aesthetics has always been combined with market demands and new business opportunities.

From the very beginning to the design application, the product life cycle is strictly controlled to make sure that each light fixture meets the highest quality expectations and safety requirements.



These components give Fabbian products a vast and diversified array of inspirations and styles, which is also ensured by yearly prestigious collaborations with well-renowned and emerging designers.





## North America.

For the North America market, Fabbian USA recently opened a new office in the world's capital of design, New York City, just blocks from Time Square, after 17 years in other locations.

## Company structure.

Proudly headquartered in Castelminio di Resana, in the Venetian Countryside, the company has an international outreach.

From Venice, it manages directly the European region, while it distributes the products through agents or importers in the other macro-geographical areas (Greater China, Russia, South and East Asia, South America, GCC countries, Northern Africa).



Designers.

Fabbian has collaborated with some of the most prestigious designers throughout the world to create unique elements for your home and business.



A. SAGGIA &  
V. SOMMELLA



AFRA & TODIA  
SCARPA



ALBERTO APOSTOLI



ALBERTO TORSELLO



FORMFJORD



FRANCESCO  
LUCCHESI



GIAMPIERO DERAÏ



GIAN PAOLO GANOVA



MATALI CRASSET



MATHIEU  
LEHANNEUR



NICOLA DESIGN



NICOLA GARDIN-  
ROGER ZANON



ALESSANDRA  
BALDERESCHI



ALI SIAHVOSHI



BARLEX MEJOR



BENJAMIN HUBERT



GIGI ROSSI



GIO MINELLI



GUILLAUME  
DELVIGNE



JOELLA FONTANA  
DZU



RAMIO DESIGN



PAOLO DE LUCCHI



PELLEGRINI+MENGATO  
DESIGN



PIOLETTO TOSO



BRIDGEWELL  
CONSULTING LTD



CONSTANCE GUISSSET



D. BUSATO &  
G. CICCARESE



DESIGNZAGATO



KARIM RASHID



LAGANJA DESIGN



LORENZO TRUANI



LUCA SCACCHETTI



PROSPERO RASULO



RENATO MONTAGNER



STUDIO FUTURA



TIZIANO MAFFIONE



DOMPIER&PISONI



FE DESIGN



FEDERICA BUSANI



FLYNN TALBOT



LUCIE KOLDOVA



MARC SADLER



MARY PAVIN



MASSIMO&MARZIA  
SACCONI



VIM & VIGOR



VITTORIO MASSIMO



### Trade Shows & Events.

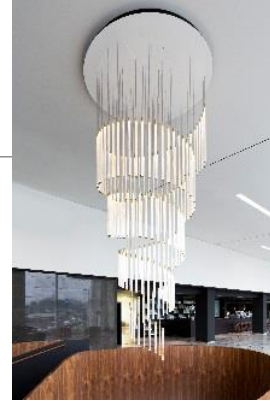
Fabbian takes part in the world's most relevant trade show dedicated to light, EUROLUCE, in Milan, every two years, with a massive booth to showcase new collections and best seller products. Other important dates in the Fabbian's calendar are Stockholm Furniture & Light Fair, WantedDesign Manhattan, and Sleep London.





# FABBIAN BREADTH OF LINE

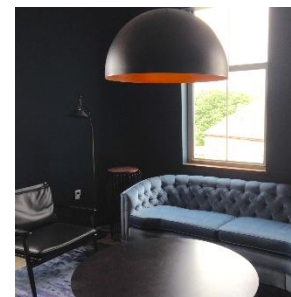
## FABBIAN CUSTOM



Customizable &  
Unique Art & Large  
scale products

Client Specific  
Custom Fixture  
Development

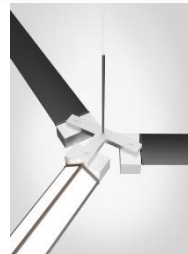
## FABBIAN DECORATIVE



Both Glass and Non-  
Glass Feature  
Elements.

Varying Styles,  
uniquely Italian for  
the specified project

## FABBIAN TECH



Italian Architectural  
Downlights, Linear, &  
Systems



## F47 Saya

Introducing Saya F47, a collection of unique Venetian art glass pendants that now offer master crafted work on a production scale.

Each bulging glass element of Fabbian's new Saya light fixture is hand crafted through expert glass making techniques possible only by the greatest masters of the craft.





## F 47 Saya

This unique cage form has historically only been available through the most renowned art glass houses in Murano and only as specialty art elements and commissioned works. Never before has this design style and quality been readily available to the North American market. With Saya, the ability to have an expert art glass lamp forged in a limited virtuoso Murano style is now within reach of any design concept!

Saya is offered in 3 shapes, multiple finishes and clear glass. Saya F47 will be the centerpiece in all residential and commercial projects.

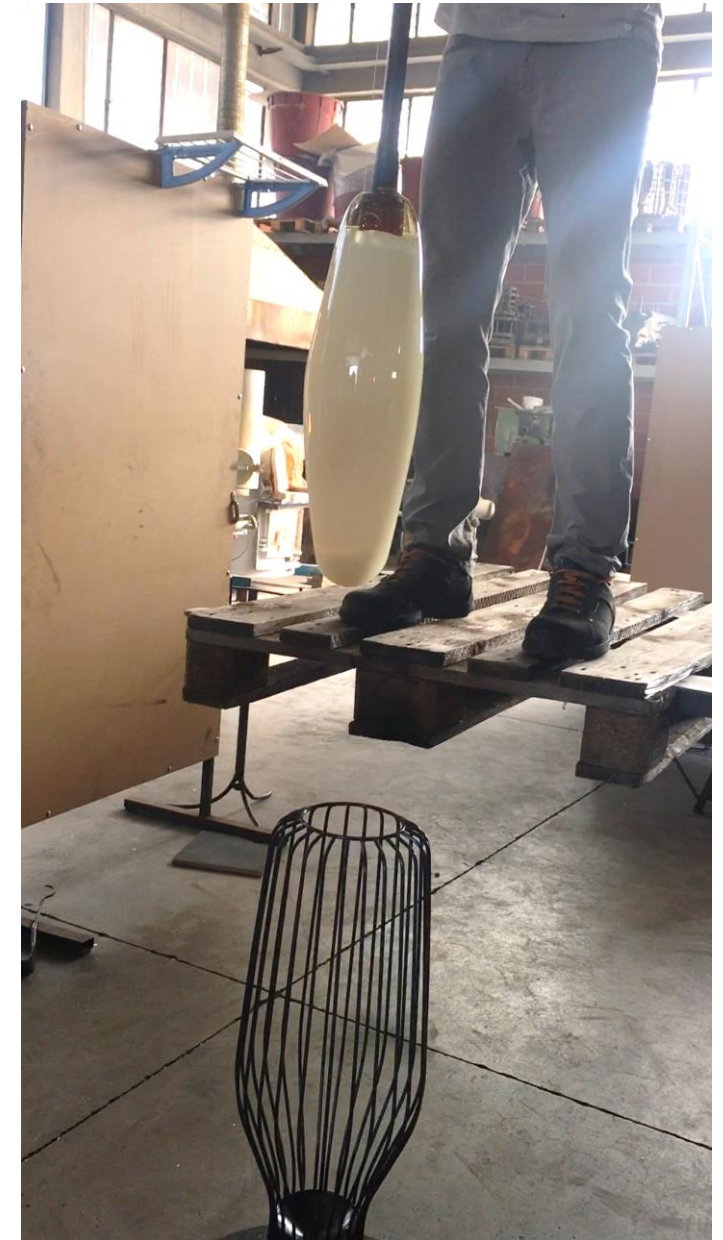
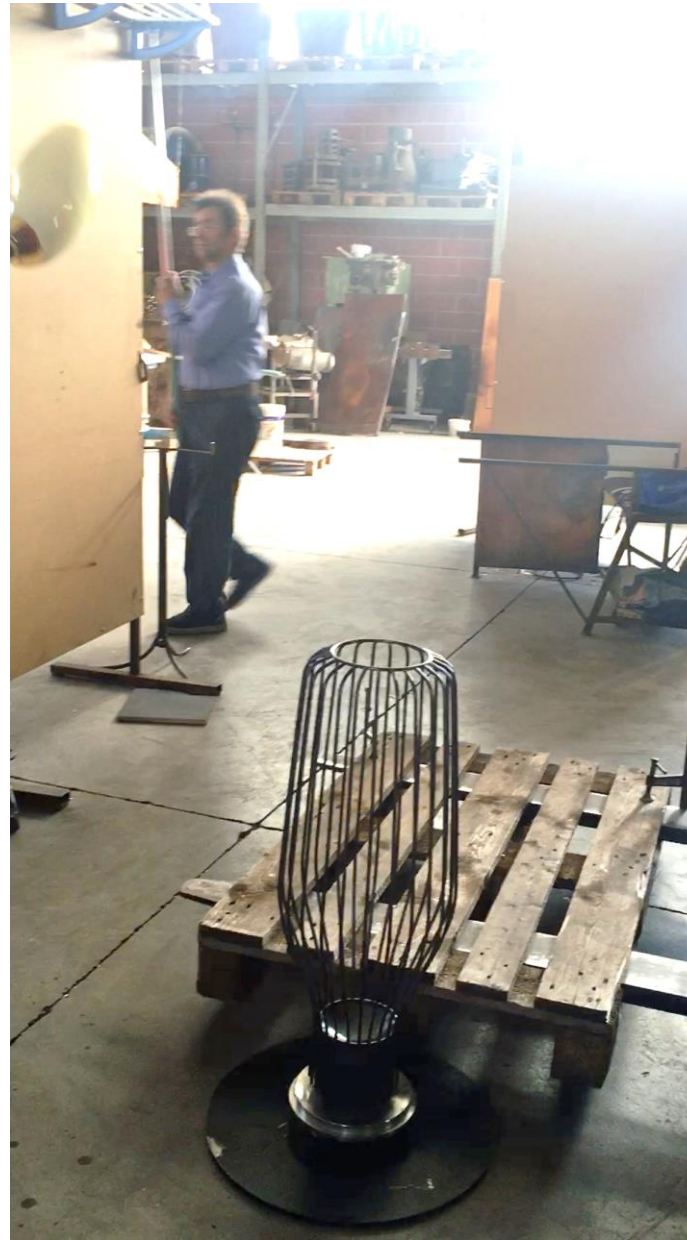




## F47 Saya - Craftsmanship

Saya starts with 2 iron rings that our blacksmith forges numerous iron bars to create the fixture's mold.

This cage structure is the foundation of the Saya. The structure is clarified and cleaned and prepared for the next steps. Master craftsmen work in teams to complete each piece.





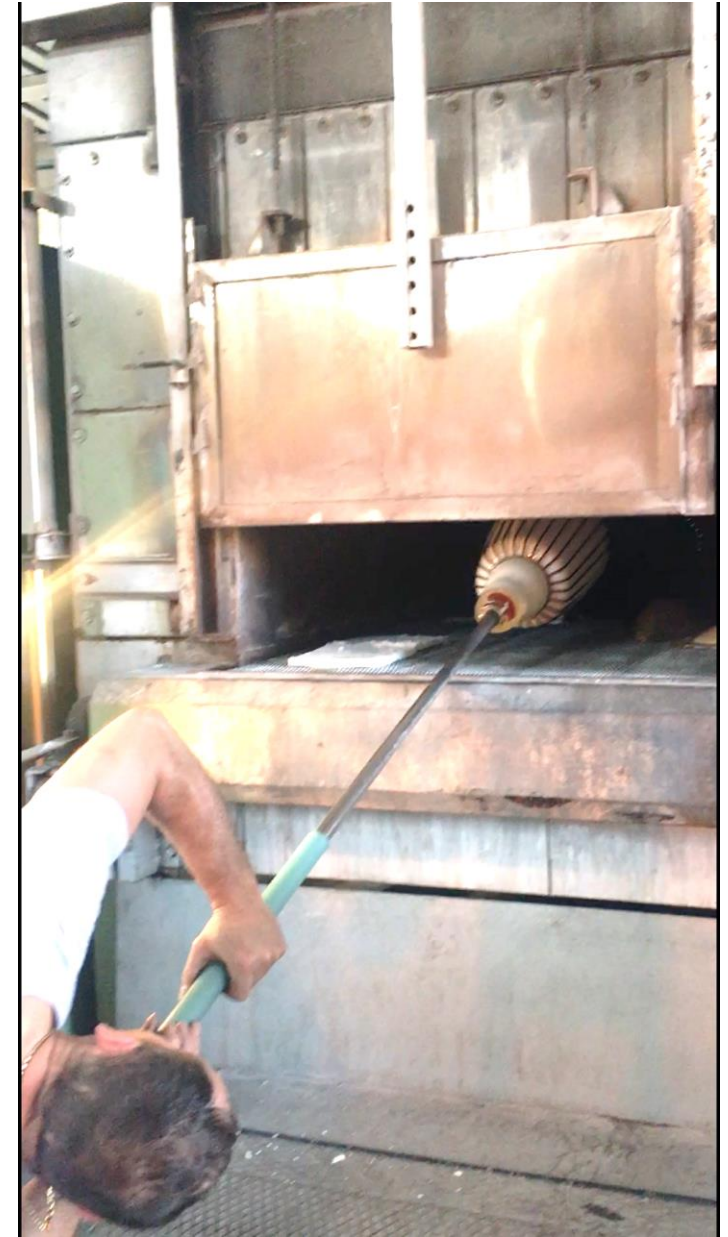
## F47 Saya - Craftsmanship

The artisan glass blower sets the structure in a stand and using the blowpipe and a freeform approach, blows a clear or white glass into the structure to create nearly symmetrical gibbous protrusions between each line of the frame.





## F47 Saya - Craftsmanship



## F47 Saya - Finishes

After the structure cools for 8+ hours in the annealing oven, the top of the glass is cut and polished to prepare for the lighting elements.

Prior to adding the light source and wiring, the completed unique cage form with the glass already in it, is electrostatically plated with one of three exciting final finishes.





## F47 Saya - Models

16"

Lamp Type: 1 X 250W E26 120V Incandescent, LED or CFL

Dimensions: 15.7" Dia X 17.7"H; 78.8" max height

5.4" Dia Canopy

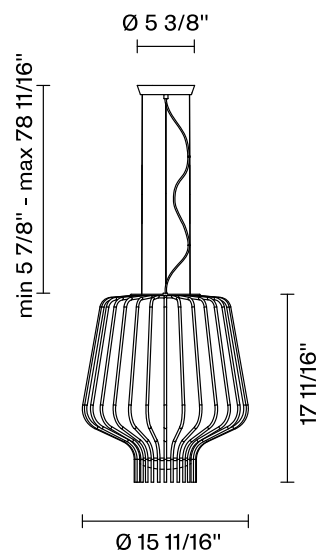
Dimmable: Triac (Depending on selected light source)

Model Numbers:

F47 A09A 00 - Clear Burnished

F47 A11A 00 - Clear Chrome

F47 A21A 00 - Clear Gold



## F47 Saya- Models

19"

Lamp type: 1 X 250W E26 120V Incandescent, LED or CFL

Dimensions: 18.8" Dia X 20.1" H; 78.8" max height

5.4" Dia Canopy

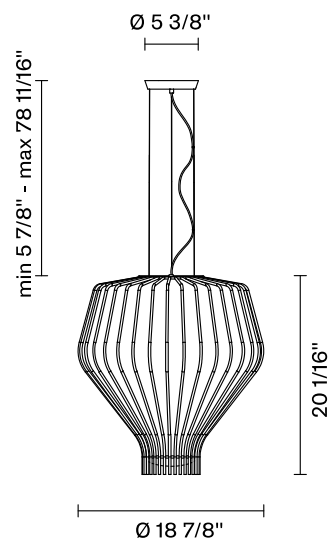
Dimmable: Triac (Depending on selected light source)

Model Numbers:

F47 A13A 00 - Clear / Burnished

F47 A15A 00 - Clear / Chrome

F47 A23A 00 - Clear / Gold





## F47 Saya- Models

30"

Lamp type: 1 X 250W E26 120V Incandescent, LED or CFL

Dimensions: 12.2" Dia X 29.5" H; 78.8" max height

5.4" Dia Canopy

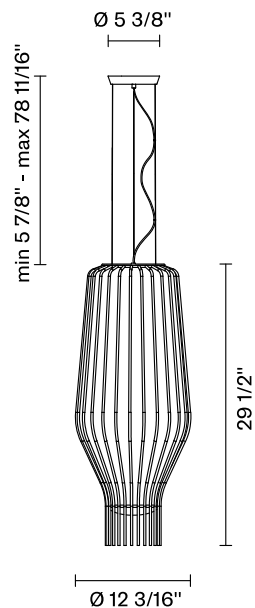
Dimmable: Triac (Depending on selected light source)

Model Numbers:

F47 A17A 00 - Clear / Burnished

F47 A19A 00 - Clear / Chrome

F47 A25A 00 - Clear / Gold (Left)





For more information contact:  
**Fabbian USA**  
[www.fabbian.us](http://www.fabbian.us)  
307 W38th St. Ste 1103  
New York, NY 10018 USA  
[sales@fabbian.com](mailto:sales@fabbian.com)

**Fabbian**