

:Fabbian



***FABBIAN DECORATIVE
F12 ROOFER***





Company overview.

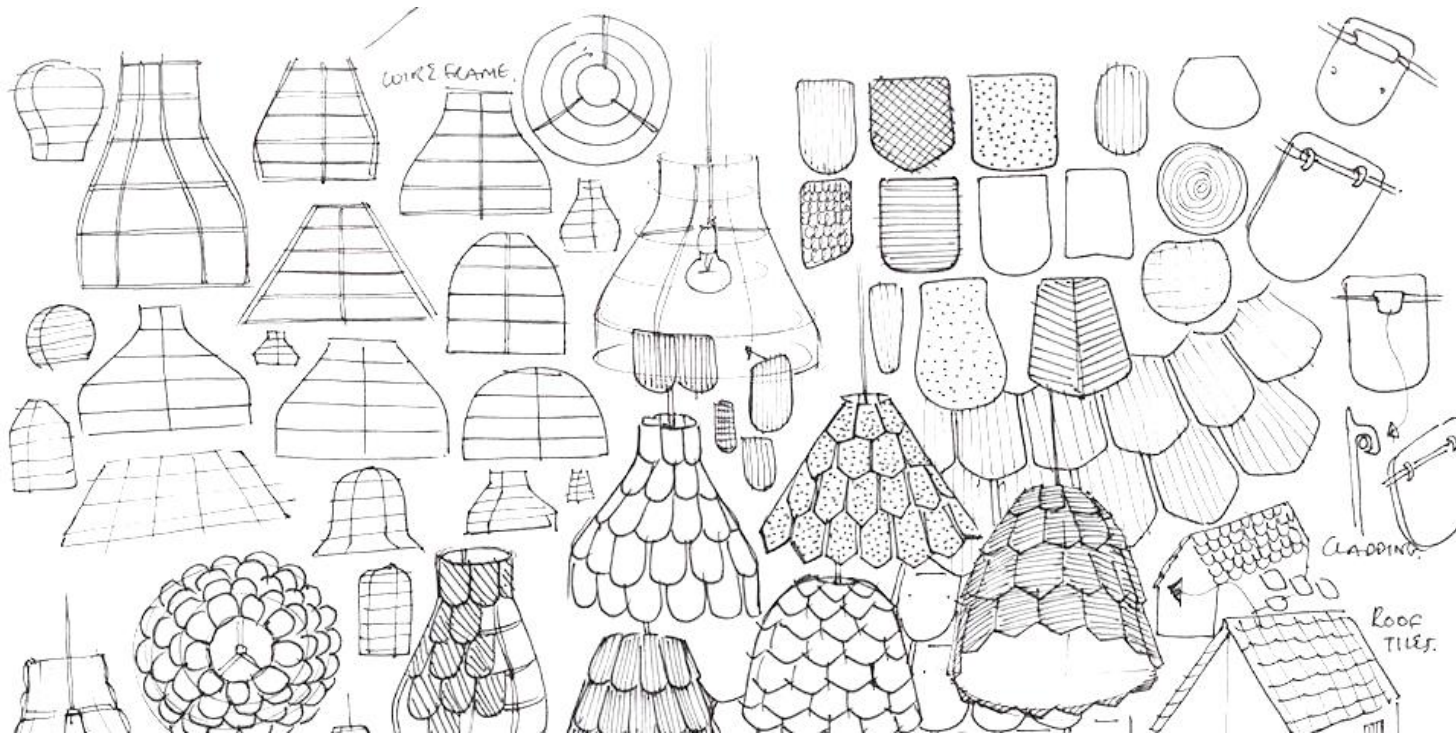
Established in 1961 in the Venetian countryside, Fabbian is one of the premier Italian lighting manufacturers operating in the modern design market, designing and manufacturing lighting fixtures for residential and commercial markets.

This history, combined with traditional Italian craftsmanship and the finest quality, keeps Fabbian a prominent brand that is internationally recognized in the architectural and design communities worldwide.

Company overview.

The endless research on new materials, trends, and aesthetics has always been combined with market demands and new business opportunities.

From the very beginning to the design application, the product life cycle is strictly controlled to make sure that each light fixture meets the highest quality expectations and safety requirements.



These components give Fabbian products a vast and diversified array of inspirations and styles, which is also ensured by yearly prestigious collaborations with well-renowned and emerging designers.



North America.

With over 20 years in North America, Fabbian USA offices are located in the world's capital of design, **New York City**, just blocks from Time Square.

COMPANY PROFILE

Company structure.

Proudly headquartered in Castelmino di Resana, in the **Venetian Countryside**, the company has an international outreach.

From **Venice**, it manages directly the European region, while it distributes the products through agents or importers in the other macro-geographical areas (Greater China, Russia, South and East Asia, South America, GCC countries, Northern Africa).



Designers.

Fabbian has collaborated with some of the most prestigious designers throughout the world to create unique elements for your home and business.



A. SAGGIA &
V. SOMMELLA



AFRA E TOSIA
SCARPA



ALBERTO APOSTOLI



ALBERTO TORSELLO



FORMFJORD



FRANCESCO
LUCCHESI



GIAMPIERO DERAÏ



GIAN PAOLO CANOVA



MATALI CRASSET



MATHIEU
LEHANNEUR



NICOLA DESIGN



NICOLA GARDIN-
ROGER ZANON



ALESSANDRA
BALDERESCHI



ALI SIAHVOSHI



BARTEK MEJOR



BENJAMIN HUBERT



GIGI ROSSI



GIO MINELLI



GUILLAUME
DELVIGNE



J. DELLA FONTANA
DZU



PAMIO DESIGN



PAOLO DE LUCCHI



PELLEGRINI+MENGATO
DESIGN



PIOSTITO TOSO



BRIDGEWELL
CONSULTING LTD



CONSTANCE GUISSSET



D. SUSATO &
G. CICCARESE



DESIGNZAGATO



KARIM RASHID



LAGRANJA DESIGN



LORENZO TRUANI



LUCA SCACCHETTI



PROSPERO RASULO



RENATO MONTAGNER



STUDIO FUTURA



TIZIANO MAFFIONE



DOMPIER&PISONI



FE DESIGN



FEDERICA BUSANI



FLYNN TALBOT



LUCIE KOLDOVA



MARC SADLER



MARY PAVIN



MASSIMO&MARZIA
SACCONI



VIM & VIGOR



VITTORIO MASSIMO

Trade Shows & Events.

Fabbian takes part in the world's most relevant trade show dedicated to light, EUROLUCE, in Milan, every two years, with a massive booth to showcase new collections and best seller products. Other important dates in the Fabbian's calendar are Stockholm Furniture & Light Fair, WantedDesign Manhattan, and Sleep London.



FABBIAN BREADTH OF LINE

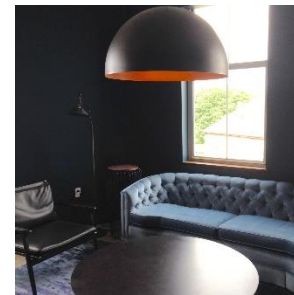
FABBIAN CUSTOM



Customizable &
Unique Art & Large
scale products

Client Specific
Custom Fixture
Development

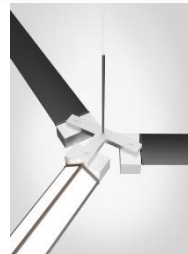
FABBIAN DECORATIVE



Both Glass and Non-
Glass Feature
Elements.

Varying Styles,
uniquely Italian for
the specified project

FABBIAN TECH



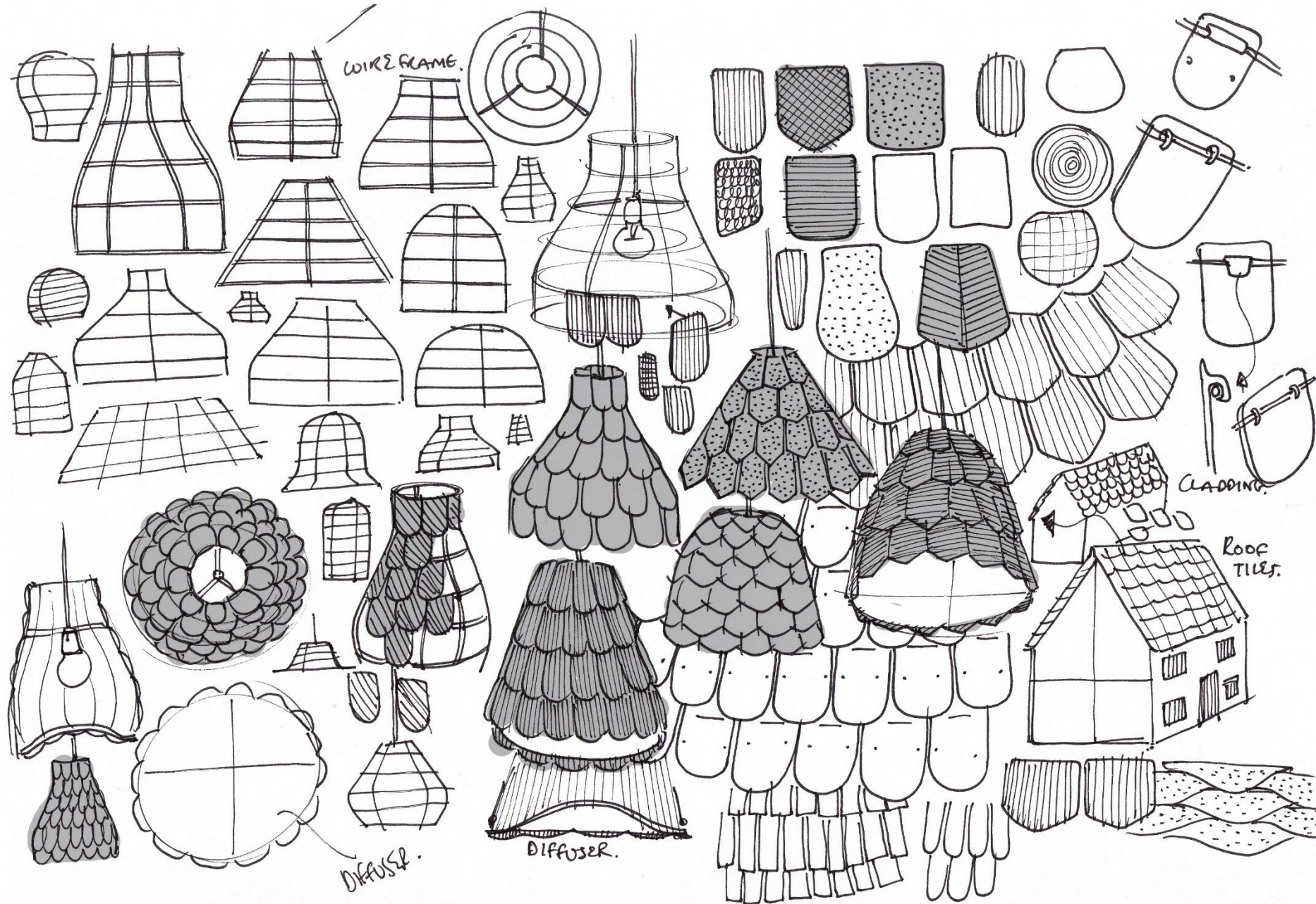
Italian Architectural
Downlights, Linear, &
Systems

F12 ROOFER

F12 Roofer Collection is the design of Benjamin Hubert. The collection draws its inspiration from roof tiles and makes the 'shingle' the central element of the collection. The intent was to create a fun collection with familiar and unusual elements.

The central element of Roofer are the **shingles**- they are made from a semi-rigid rubbery material and offered in 4 color families. The pendants come in 5 different shapes and can be installed suspended or near-flush mount.

Roofer's design, materials and selection of colors allow this collection to work with residential and commercial interiors.



F12 ROOFER- The Designer

Born in the UK in 1984, Benjamin Hubert studied Industrial Design and Technology at Loughborough University and graduated in 2006. The Benjamin Hubert Design Studio in London was founded shortly afterwards in 2007 and specializes in industrial design across furniture and lighting sectors working with international manufacturers across Europe and Asia.

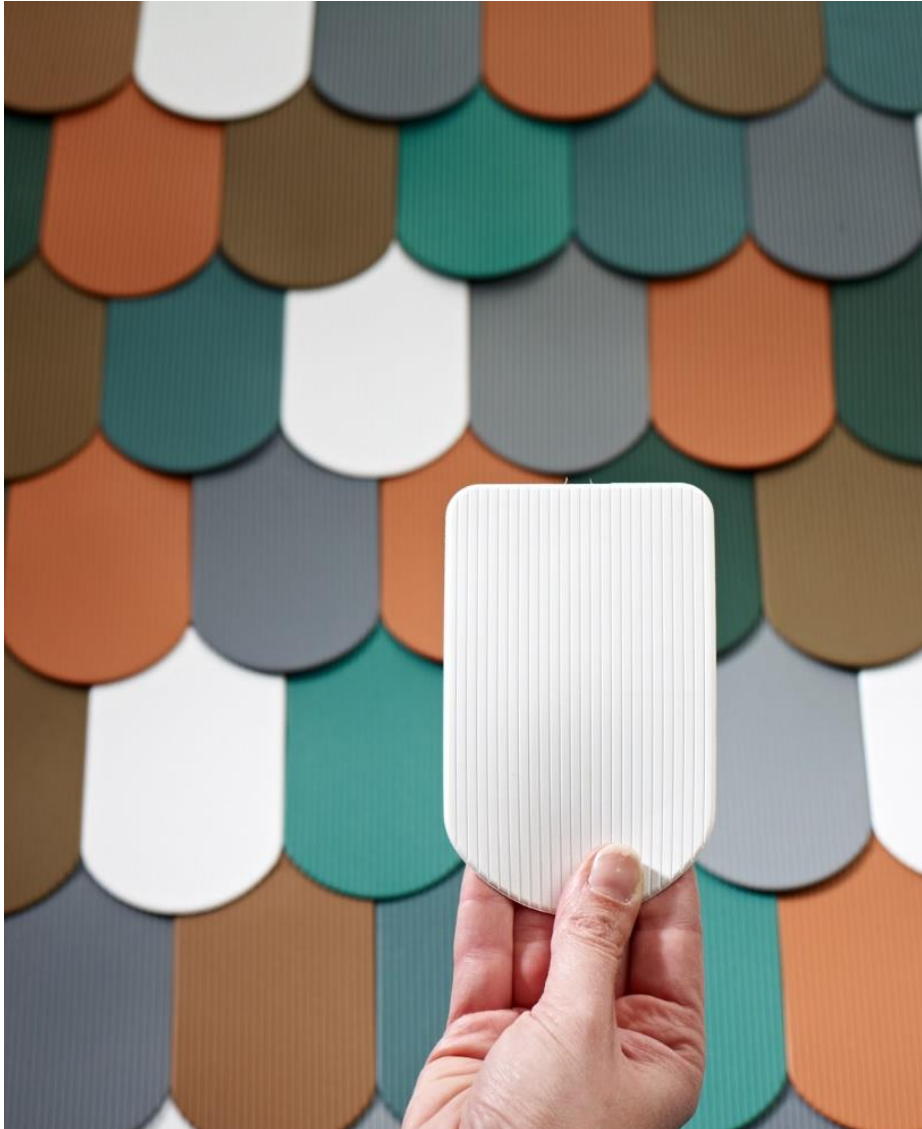
In every design project he first carefully examines and challenges the materials and production processes used. Collaboration with a tight network of craftsmen, model shops and manufacturers serves Benjamin Hubert and his team as a direct source of inspiration. The studio works on a diverse range of projects including both mass/batch produced consumer products and limited edition / one off's.

Hubert designs timeless objects that do not follow trends but are based instead on a close analysis of usage habits, materials and sustainability and are hence developed in a process of visual reduction.

Benjamin Hubert has received international critical and media acclaim and has been exhibited internationally. Benjamin has also received a number of prestigious awards including: Design of the year (British Design awards 2010) Best Product (100% design/Blueprint awards 2009) Homes and Gardens Young designer Year (Design Classic awards 2010) and EDIDA International Young Designer of the year 2010.



F12 ROOFER



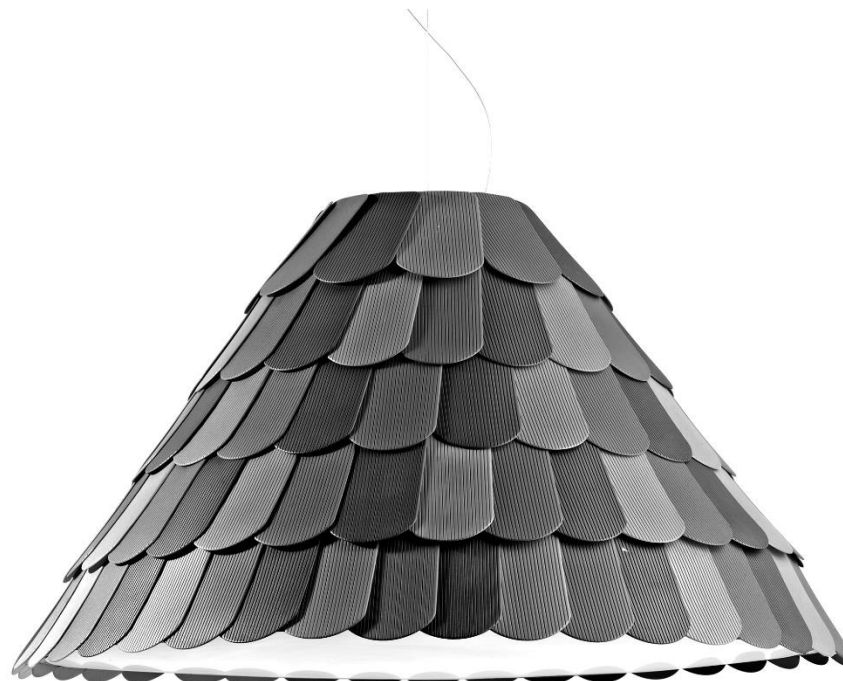
Roofers' central element is its shingle. Made from a semi-rigid polypropylene with a scalloped appearance to mimic roof tiles. The shingles are offered in 4 color families. Each shingle is easily placed onto the metal frame of the fixture.

Each family (excluding white) comes in three tones of the color- this creates visual texture by simulating light and shadow as would be on a roof.

For added versatility each shingle is machine washable (water temps below 30C)- allowing the fixture to be easily cleaned and maintained.



F12 ROOFER



Product Lineup

F12 ROOFER - Models

22"

Metal frame with polypropylene shingles and polymethyl-methacrylate bottom diffuser.

Includes de-centralization kit for off-center mounting.

Lamp Type:

- E26: 1 X 250W Maximum E26 120V Incandescent, LED or CFL

Dimensions: 22.4" Dia X 18.5"H; 78" max height

4.8" Dia Canopy

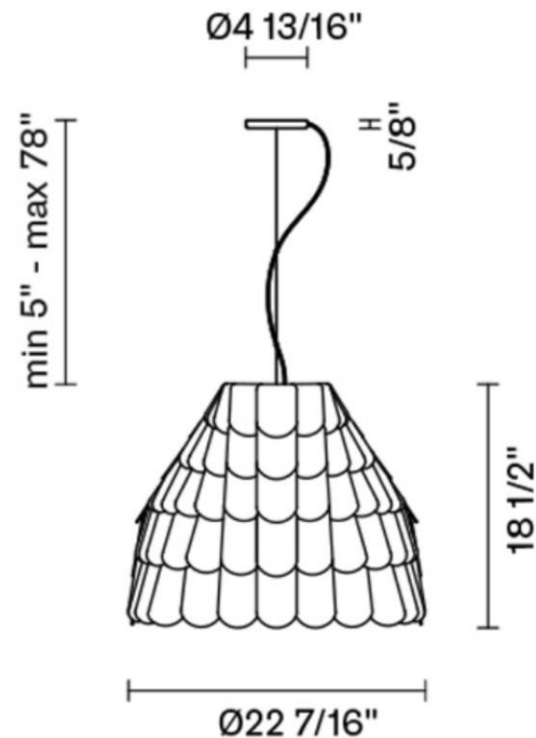
Model Numbers:

F12 A01A 01-White

F12 A01A 21 - Anthracite

F12 A01A 32- Orange

F12 A01A 43 - Green



F12 ROOFER - Models

30"

Metal frame with polypropylene shingles and polymethyl-methacrylate bottom diffuser.

Includes de-centralization kit for off-center mounting.

Lamp Type:

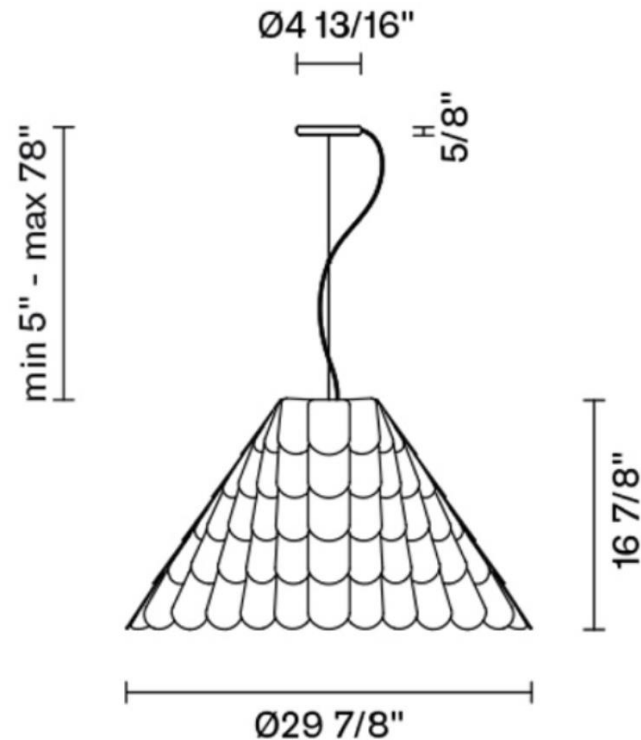
- E26: 1 X 250W Maximum E26 120V Incandescent, LED or CFL

Dimensions: 29.8" Dia X 16.8"H; 78" max height

4.8" Dia Canopy

Model Numbers:

- F12 A03A 01 - White
- F12 A03A 21 - Anthracite
- F12 A03A 32 - Orange
- F12 A03A 43 - Green



F12 ROOFER - Models

23"

Metal frame with polypropylene shingles and polymethyl-methacrylate bottom diffuser.

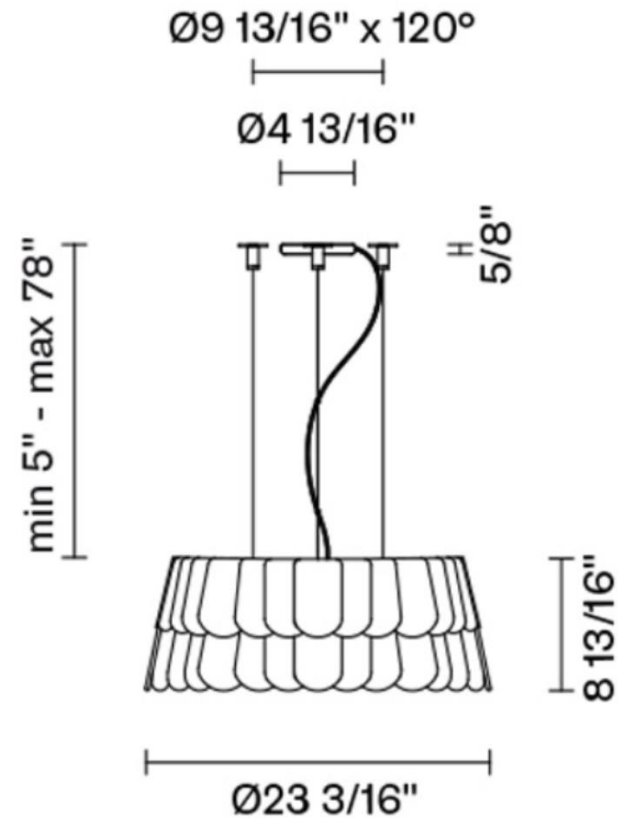
Lamp Type:

- E26: 6 X 23W Maximum E26 120V LED or CFL

Dimensions: 23.2" Dia X 8.8"H; 78" max height
4.8" Dia Canopy

Model Numbers:

- F12 A05A 01 - White
- F12 A05A 21 - Anthracite
- F12 A05A 32 - Orange
- F12 A05A 43 - Green



F12 ROOFER - Models

31"

Metal frame with polypropylene shingles and polymethyl-methacrylate bottom diffuser.

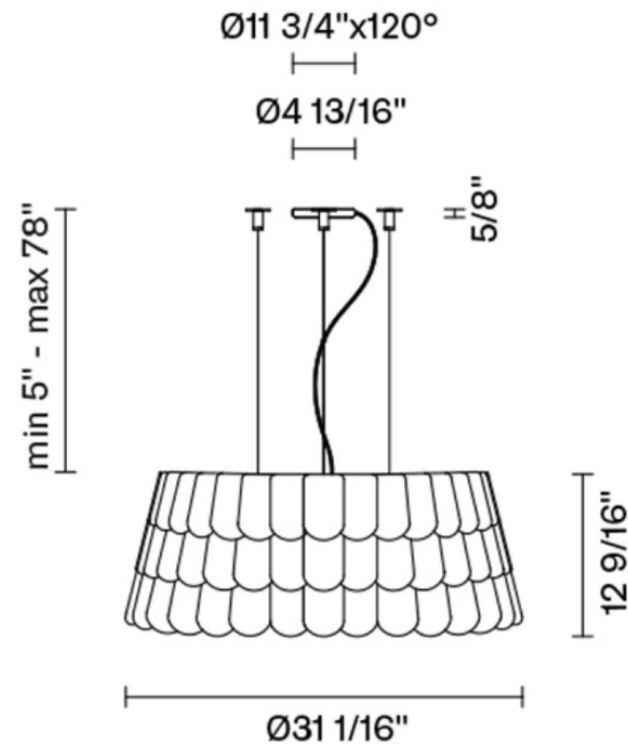
Lamp Type:

- E26: 6 X 32W Maximum E26 120V LED or CFL

Dimensions: 31.1" Dia X 12.6"H; 78" max height
4.8" Dia Canopy

Model Numbers:

- F12 A07A 01 - White
- F12 A07A 21 - Anthracite
- F12 A07A 32 - Orange
- F12 A07A 43 - Green



F12 ROOFER - Models

47"

Metal frame with polypropylene shingles and polymethyl-methacrylate bottom diffuser.

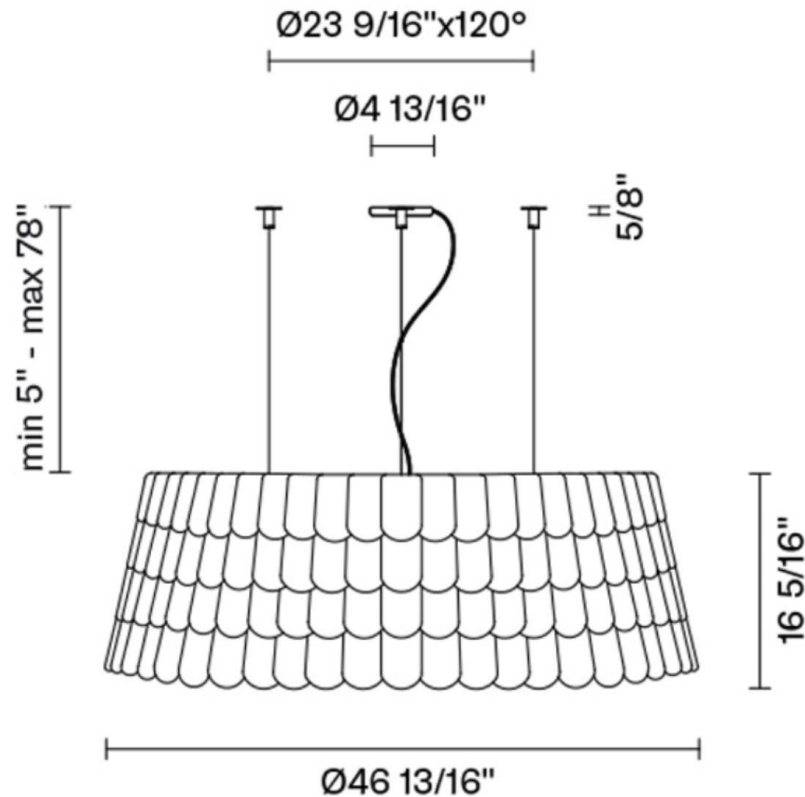
Lamp Type:

- E26: 12 X 32W Maximum E26 120V LED or CFL

Dimensions: 46.8" Dia X 16.3"H; 78" max height
4.8" Dia Canopy

Model Numbers:

- F12 A09A 01 - White
- F12 A09A 21 - Anthracite
- F12 A09A 32 - Orange
- F12 A09A 43 - Green





F12 ROOFER -Colors

Standard Finishes

Roofers are offered in four standard color families. Each family (except white) is made up of 3 tones of the color.

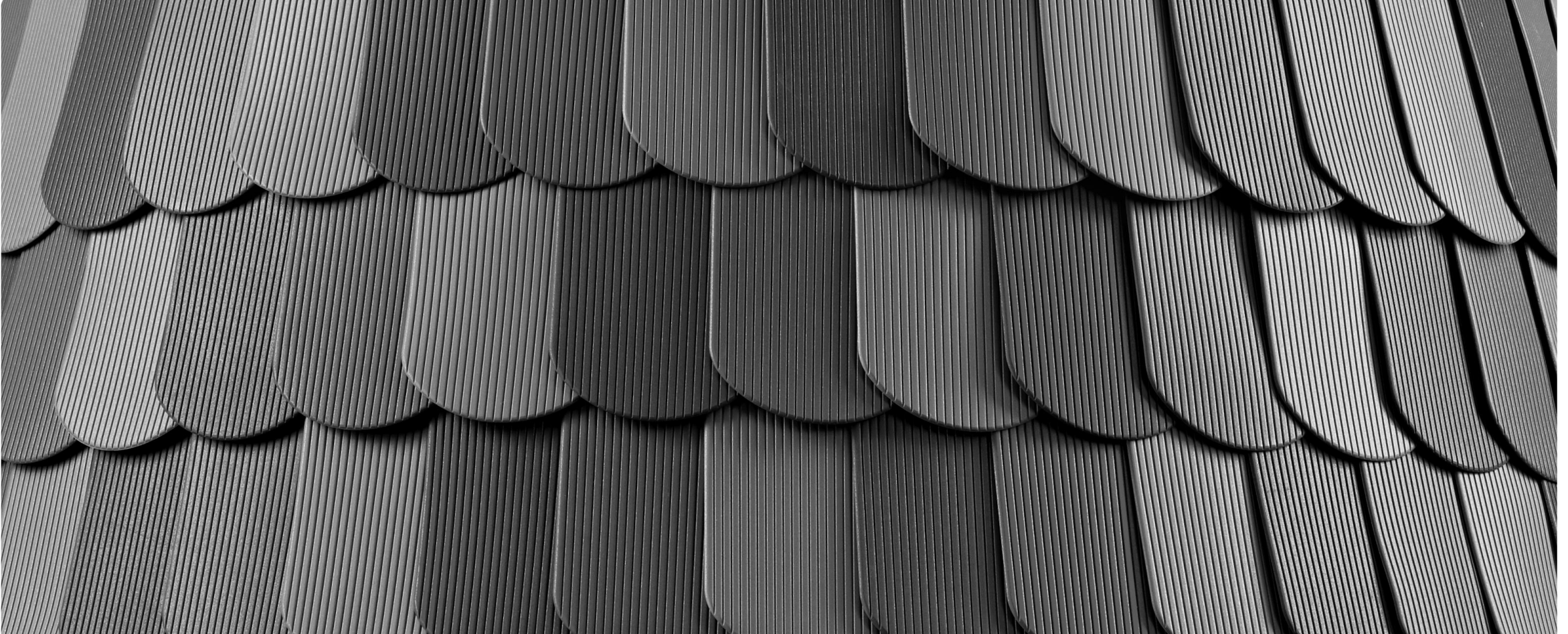


White

F12 ROOFER -Colors

Standard Finishes

Roofer is offered in four standard color families. Each family (except white) is made up of 3 tones of the color.



Anthracite

F12 ROOFER -Colors

Standard Finishes

Roofer is offered in four standard color families. Each family (except white) is made up of 3 tones of the color.



Green

F12 ROOFER -Colors

Standard Finishes

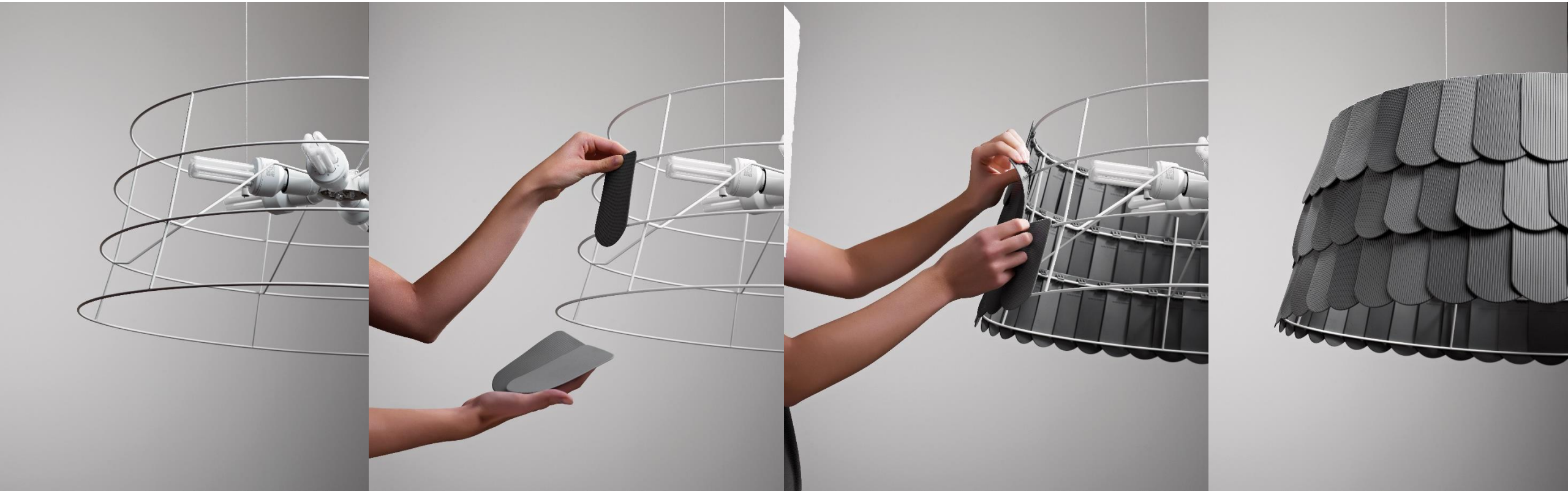
Roofers are offered in four standard color families. Each family (except white) is made up of 3 tones of the color.



Orange

F12 ROOFER -Assembly

Roofer requires simple assembly before installation.



F12 ROOFER -Assembly

Roofer drum pendants can be installed as flush mount fixtures by shortening the cables on installation.



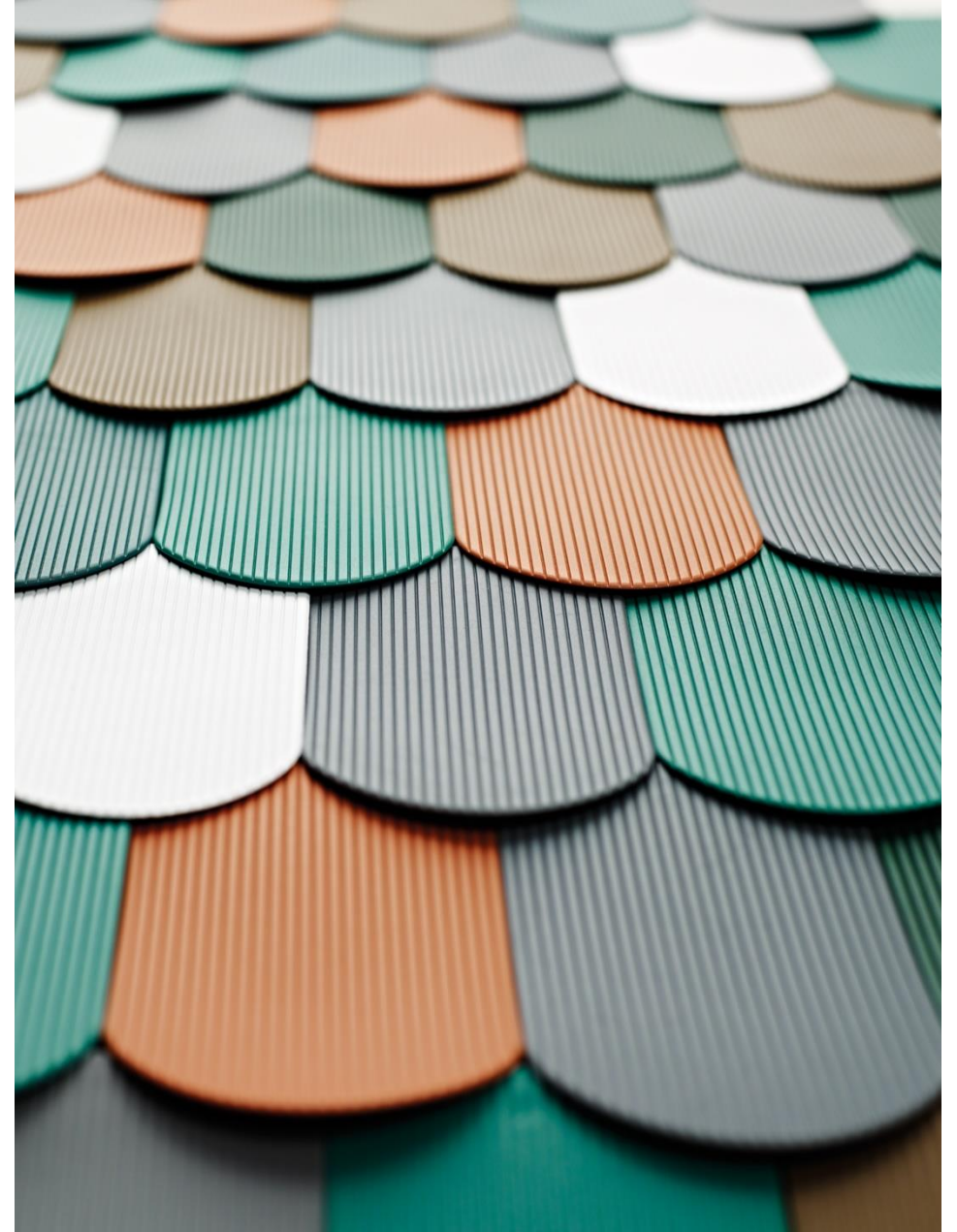
F12 ROOFER -Assembly

Custom Options

- Roofer colors can be mixed and matched, as an example, only dark grey tones or a mix of all colors.
- Custom colors are available, there is a minimum of 2,500 shingles required.

Number of shingles per fixture:

- | | |
|------------|--------------|
| • F12 A01A | 122 shingles |
| • F12 A03A | 129 shingles |
| • F12 A05A | 65 shingles |
| • F12 A07A | 134 shingles |
| • F12 A09A | 276 shingles |





Baffito's Bar&Pizzeria
Warrington, Cheshire
Contractor: Andy
Thornton Ltd

F12 Roofer



ВЫХОД

Gravilla Serrana
Chateau Fourcas Hosten
La Montesia Richa







For more information contact:
Fabbian USA
www.fabbian.us
307 W38th St. Ste 1103
New York, NY 10018 USA
sales@fabbian.com

Fabbian