

FABBIAN CUSTOM

F32 Multispot Product Range

 Fabbian

COMPANY PROFILE



Company overview.

Established in 1961 in the Venetian countryside, Fabbian is one of the premier Italian lighting manufacturers operating in the modern design sector, designing and manufacturing lighting fixtures for residential and commercial markets.

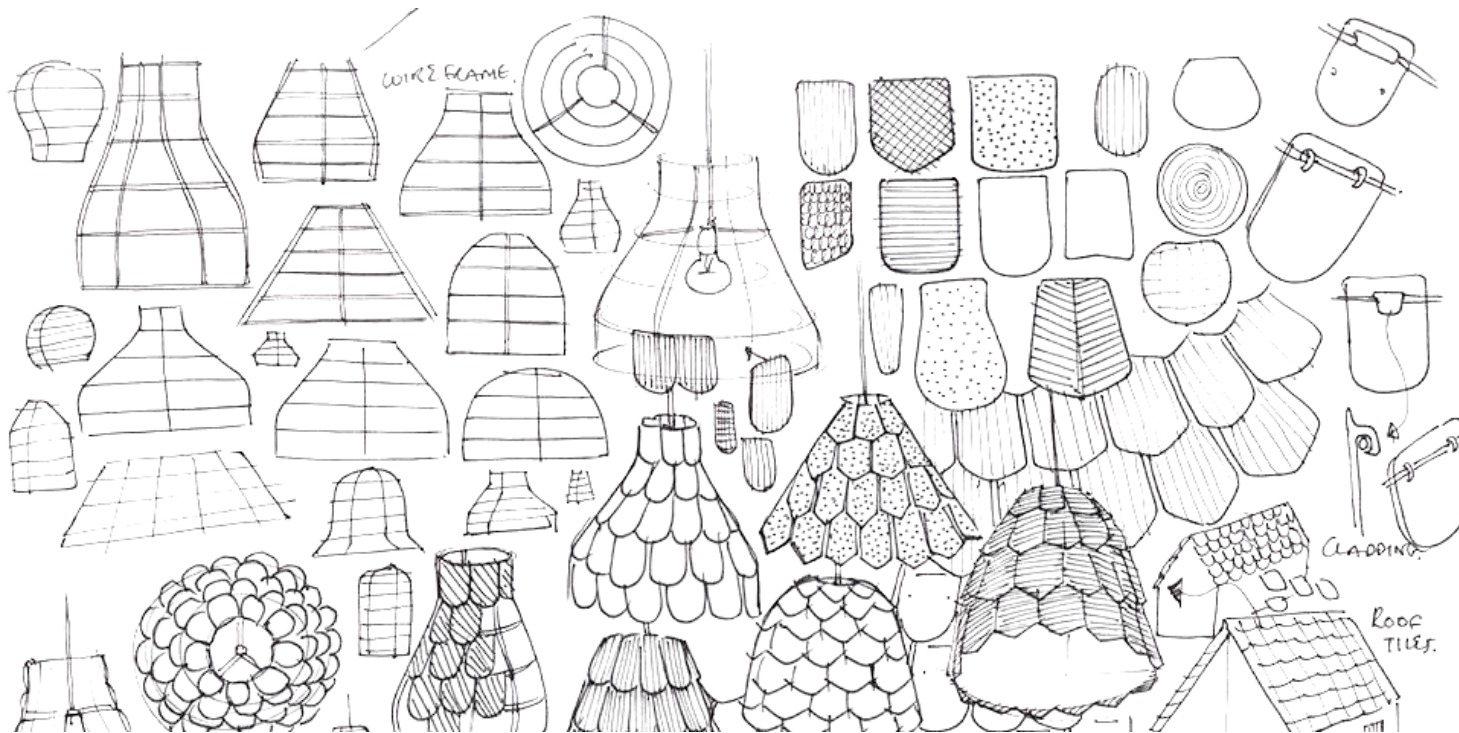
This history, combined with traditional Italian craftsmanship and the finest quality, keeps Fabbian a prominent brand that is internationally recognized in the architectural and design communities worldwide.

COMPANY PROFILE

Company overview.

The endless research on new materials, trends, and aesthetics has always been combined with market demands and new business opportunities.

From the very beginning to the design application, the product life cycle is strictly controlled to make sure that each light fixture meets the highest quality expectations and safety requirements.



These components give Fabbian products a vast and diversified array of inspirations and styles, which is also ensured by yearly prestigious collaborations with well-renowned and emerging designers.

COMPANY PROFILE



North America.

With over 20 years in North America, Fabbian USA offices are located in the world's capital of design, **New York City**, just blocks from Time Square.

Company structure.

Proudly headquartered in Castelmimo di Resana, in the **Venetian Countryside**, the company has an international outreach.

From **Venice**, it manages directly the European region, while it distributes the products through agents or importers in the other macro-geographical areas (Greater China, Russia, South and East Asia, South America, GCC countries, Northern Africa).



COMPANY PROFILE

Designers.

Fabbian has collaborated with some of the most prestigious designers throughout the world to create unique elements for your home and business.



A. SAGGIA &
V. SOMMELLA



AFRA E TOSIA
SCARPA



ALBERTO APOSTOLI



ALBERTO TORSELLO



FORMFJORD



FRANCESCO
LUCCHESI



GIAMPIERO DERAÏ



GIAN PAOLO CANOVA



MATALI CRASSET



MATHIEU
LEHANNÉUR



NICOLA DESIGN



NICOLA GARDIN-
ROGER ZANÓN



ALESSANDRA
BALDERESCHI



ALI SIAHVOSHI



BARTEK MEJÓR



BENJAMIN HUBERT



GIGI ROSSI



GIO MINELLI



GUILLAUME
DELVIGNE



J. DELLA FONTANA
DZU



PAMIO DESIGN



PAOLO DE LUCCHI



PELLEGRINI+MENGATI
DESIGN



PIOSTITO TOSO



BRIDGEWELL
CONSULTING LTD



CONSTANCE GUISSSET



D. BUSATO &
G. CICCARESE



DESIGNZAGATO



KARIM RASHID



LAGRANJA DESIGN



LORENZO TRUANT



LUCA SCACCHETTI



PROSPERO RASULO



RENATO MONTAGNER



STUDIO FUTURA



TIZIANO MAFFIONE



DOMPIER&PISONI



FE DESIGN



FEDERICA BUSANI



FLYNN TALBOT



LUCIE KOLDOVA



MARC SADLER



MARY PAVIN



MASSIMO&MARZIA
SACCONI



VIM & VIGOR



VITTORIO MASSIMO

COMPANY PROFILE

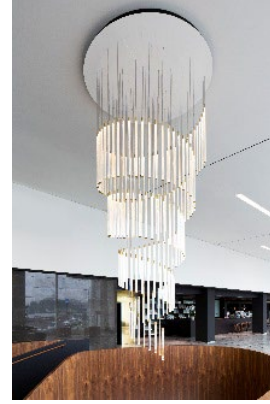
Trade Shows & Events.

Fabbian takes part in the world's most relevant trade show dedicated to light, EUROLUCE, in Milan, every two years, with a massive booth to showcase new collections and best seller products. Other important dates in the Fabbian's calendar are Stockholm Furniture & Light Fair, WantedDesign Manhattan, and Sleep London.



FABBIAN BREADTH OF LINE

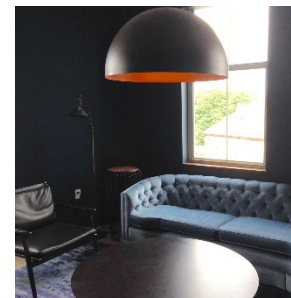
FABBIAN CUSTOM



Customizable &
Unique Art & Large
scale products

Client Specific
Custom Fixture
Development

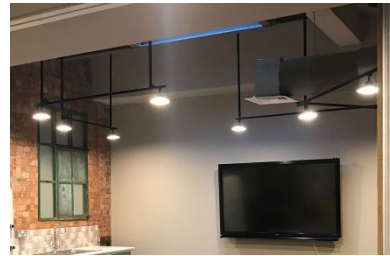
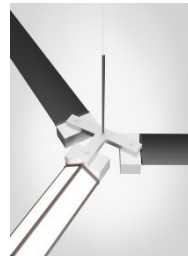
FABBIAN DECORATIVE



Both Glass and Non-
Glass Feature
Elements.

Varying Styles,
uniquely Italian for
the specified project

FABBIAN TECH



Italian Architectural
Downlights, Linear, &
Systems

F32 Multispot

In a continuous effort to create exclusive designs, Fabbian USA is proud to showcase two pieces with personalized, unique and exquisite shapes in the Multispot Series.

This modular system was designed to give the architect the flexibility to use contemporary aesthetics as a standalone element or to create entirely one-of-a-kind concepts with classic glass and crystal shapes enhanced with light.

By varying the heights and spacing, any construct is possible with this foundation.

The **tubular Tooby** series and the classic **crystal Beluga** globe can adapt to suit any environment through various mounting systems ranging from cover plates, round, square, rectilinear, and custom canopies, and even a trimless option.

Multispot is the ideal element to add a touch of allure and magic to a project.



F32 Multispot Beluga



F32 Multispot Tooby

F32 Multispot

Multispot is a unique system that offers three different system types:

Standard products - these are complete skus that include complete products. Simply choose the glass type (Beluga, or Tooby) and the number of pendants and shape of the canopy.

Custom- the Custom collections offers the Multispot system as components - pendants are offered in multiple heights; mounting options include a selection of canopies and a recessed trimless canopy. These options allow the user to tailor the fixtures to their application while also keeping ordering a simple smooth process.

Complete Custom Solutions- Complete Custom solutions offer almost limitless possibilities. They allow the creation of just the right installation for the project. From the glass size, color, and finish to the canopy shape, size, and finish- the fixture can be designed almost from scratch.



F32 Multispot - Finishes

Standard Finish:

Multispot Fixtures are available standard with an **Anodized Aluminum** Finish.

A matching silver / aluminum colored cable provides power and structure to this fixture when suspended.

This variation is stocked in North America in our New Jersey warehouse in lengths of 5', 8', and 13' for each of the 2 Multispot options (Tooby, Beluga).

Optional Finishes:

If desired, our Italy offices stock additional color/finish options which can be used and specified on projects with a 6-8 week lead time allowance.

Additional finishes available are:

- **Galvanized Copper** tone finish with copper cable
- **Anodized black** finish with black cable
- **Custom RAL** Painted Finish (min qty required)



F32 Multispot - Custom Options

With Multispot, everything is possible.

Here is a list of specific customizations that are typical and have been produced to various projects worldwide:

- Cables up to 50' Long
- Custom Canopy Sizes
- Custom Configuration of the pendant holes on the canopy
- Copper or Black Cable with matching light module
- Custom finishes for canopies (painted, mirrored, or specific metal tone)



F32 Multispot - Custom Options

With Multispot, everything is possible.

- Tooby Modifications (min qty applies):
 - ✓ Longer Length Glass
 - ✓ Shorter Length Glass
 - ✓ Wider Diameter Glass
 - ✓ Surface-Mount version
 - ✓ Custom Metal Tubes





F32 Multispot - Custom Options

With Multispot, everything is possible.

- Exterior Mounting (IP55)



Single Fixture Mount - Coverplate, Canopy

Single-Mount Applications:

When installing Multispot in Single-Mount applications, there are 3 options to choose from:

- Coverplate
- Canopy
- Trimless

Coverplate:

The simplest and preferred method of installation is to use the coverplate option.

In this application, a 4W Universal Non-Dim driver (included) can be located inside the Jbox and will be covered with a thin-profile, 5" coverplate.



Canopy:

Single-mount round and square canopies are available for discreet surface installations if required. Similarly, a 4W Universal Non-Dim Driver (included) is located within the canopy.



Dimming Single Pendants:

A larger 12W dimmable driver can be ordered separately if preferred to wire up to (3) fixtures together to meet minimum load requirements for dimming. This driver will also fit within the Junction Box or Canopy. When dimming, multiple fixtures must be series wired (max 50 ft).

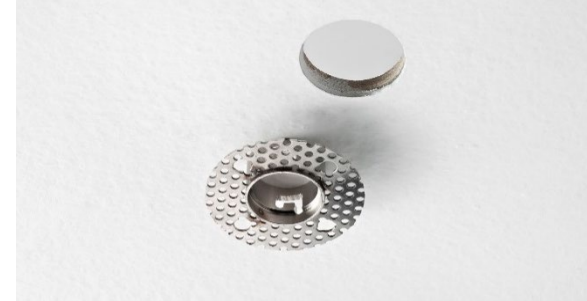
Single Fixture Multispot - Trimless

Trimless

In this application, the driver is installed in a remote, accessible location and a class 2 wire is run from the driver to a hole in the ceiling where the trim plate is roughed-in.

To finish the installation, the electrical contractor makes a Class 2 wiring connection with the wire coming from the driver. Using the patent pending Twist-N-Lock mechanism, the final installation is beautiful, clean and elegant.

Note: Max Wiring Length is 50 feet, series wired, so it is recommended to use (1) 12W driver per 3 or 4 fixtures.



1.



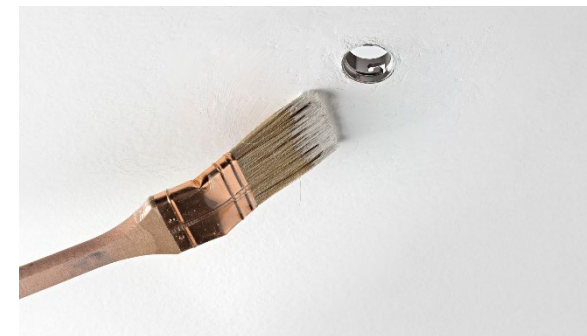
2.



3.



4.



5.



6.



7.



8.

Multi-Lamp Fixtures - Standard

Standard Multi-Lamp Options:

Fabbian USA stocks numerous options for multi-lamp clusters. In Multi-lamp clusters, fixtures are all Universal Drive and dimmable.

Available Limited Stock Options:

- Round Canopy - For 3, 5, 10, 20, 30 pendant
- Rectangular Canopy - For 3, 5, 10, 20, 30 pendant
- Square Canopy - For 30 pendants

Fabbian Multi-Lamp Fixture Advantages:

Fabbian Multi-lamp fixtures uses a 3-part canopy system that greatly simplifies the challenges typically faced by electrical contractors when installing competitors' multi-lamp fixtures.

- Upper plate is mounted to structure, surface or recessed.
- Cover Plate & Wiring Board are next added with supplied 10" threaded rods

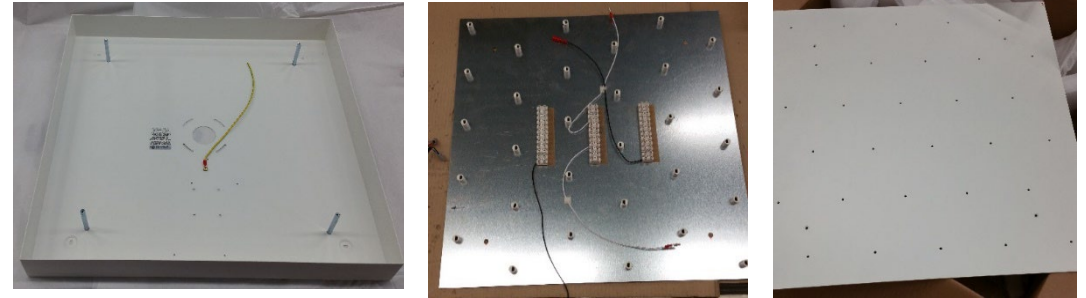
This allows the contractor:

- Room to wire each fixture individually
- Ability to set the exact desired height while suspended (not on the ground).
- One-person operation of most of the installation.

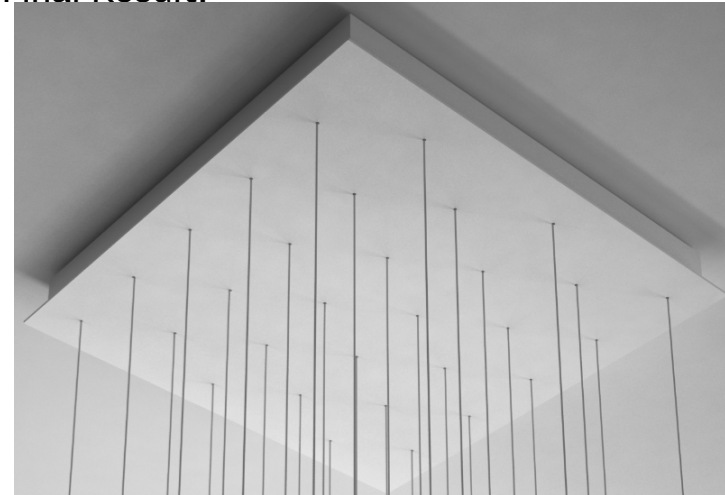
Once all pieces are in place, the bottom section is lifted flush to the top, rods removed, and replaced with the provided finish screws for a clean installation.

Fabbian 3-part Canopy with Wiring Board

- Typical for all canopies greater than 5 pieces



- Final Result:



Multi-Lamp Fixtures - Custom

Custom Multi-Lamp Options:

As noted previously, anything is possible with Multispot. With a designer's vision, comes an incredible tool to create whatever can be imagined.

Typical Lead Times for Custom Fixtures are 10 to 12 weeks by ocean freight from receipt of approved drawings. By air transit, typical lead time is from 8 to 10 weeks.

Fabbian Custom Multi-Lamp Advantages:

Fabbian takes tremendous pride in the details of Multi-lamp fixture aesthetics.

Fixture Canopies are designed to use the least number of sections possible. As an example, a Fabbian 6' Diameter Round Canopy is composed of 2 sections, whereas competitors often use 8 to 12 sections.

The ferules holding the fixture are recessed in the wire landing board on a Fabbian custom canopy whereas many of our competitors have visible set screws below the canopy cover.

The same unique fixture mounting detail used in our smaller standard canopies is applied in the custom multilamp canopies as well. This allows the contractor to measure the fixture height in the ceiling and get the exact look needed.

Clean Design Custom Canopy

- 6 foot diameter canopy composed of only 2 sections



Multi-Lamp Fixtures - Custom

Clean Design Custom Canopy

- No Visible Ferules results in a smooth and clean surface where the cords simply disappear into the ceiling.



F32 Multispot - Tooby

The Tooby Lamp is a unique design element. As in all Fabbian elements, the focus of the fixture is the glass. With a minimalistic light engine hidden within the glass structure (as opposed to an external shroud), the glass portion extends the entire 16" of the fixture.

A 3-dimensional and even lighting effect is created by using an internal ribbed acrylic reflector the length of the tube coupled with a mirrored reflector at the base. The mirrored reflector prevents a "dot-matrix" effect on the floor below the fixture.

As such, the fixture appears to glow from within and showcases the clear extruded borosilicate glass (PYREX).

At 2.1W and 200 initial lumens at the source, Tooby provides a great glow while still pleasant to look at from any angle.





Hallets Point

-

New York

Owner – The Durst Organization

Architect – Dattner Architects

Lighting Designer – OneLux Studio



Cox Castle Nicholson

-

San Francisco

Aref Associates



Confidential Client

-

Miami

**IA Interiors Miami
Bella Stairs**

Photography
by AREF Associates



Minneapolis Heart
Foudation

-

Minneapolis

bdh+young





The Upper Annex

-

Annex/Yorkville,
66 Tranby Ave

*3 Gen Development
Group Inc,
Sauvagesse Studio*



PHC Willemswerf
Rotterdam

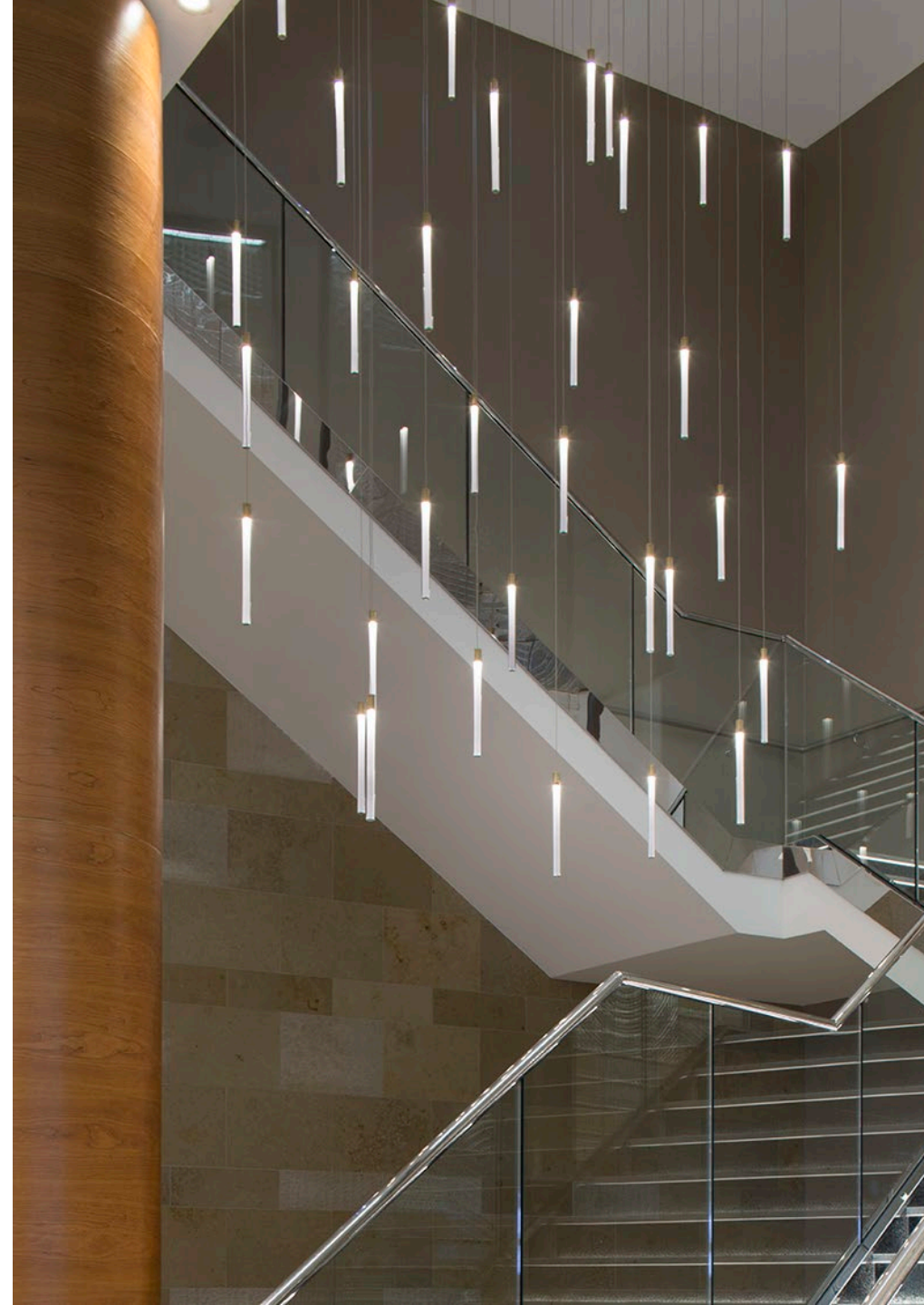
*Christian Van
der Kooy*





Intercontinental
London - The O2

Photography by
Alberto Parise



F32 Multispot-Beluga

The Beluga Lamp has become a classic design element created by Fabbian nearly 15 years ago.

As in most Fabbian elements, the Venetian roots of the company are on full display with the beautiful artistry of the glass and crystal elements.

Originally conceived as housing a projection lamp, the conical shape of the traditional Beluga design was complimented with a frosted glass interior with an integral LED Source to transform this art piece into the Multispot Beluga System. Each LED source is 3W and produces 230 lumens of 3000K illumination.





Lincoln Center
-
Dallas



Intercontinental
London - The O2



Photography by
Alberto Parise



Commercial Office Building Lobby
Downers Grove, IL

Wright Hoopes Architects



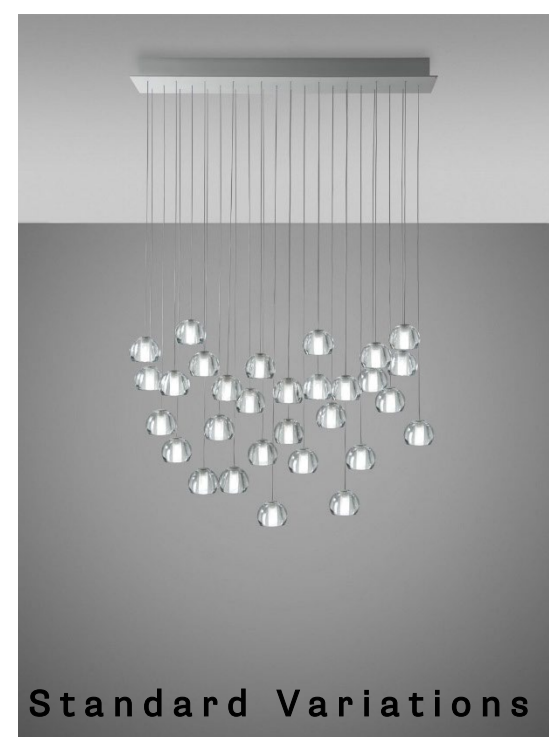
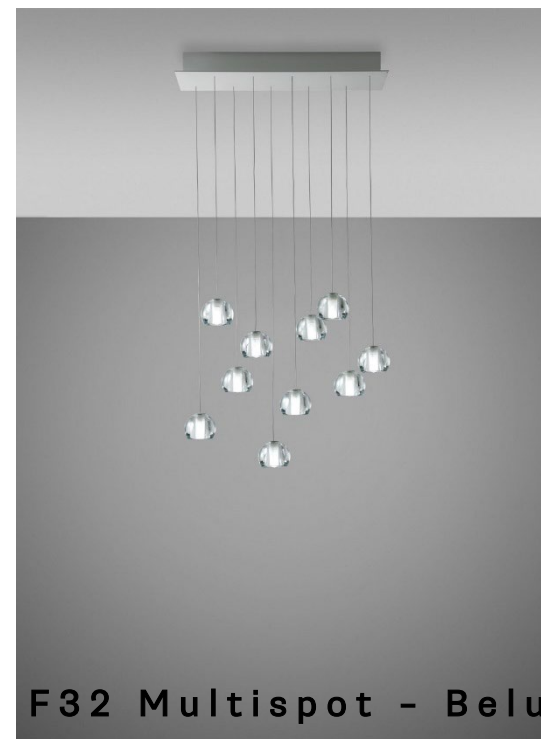
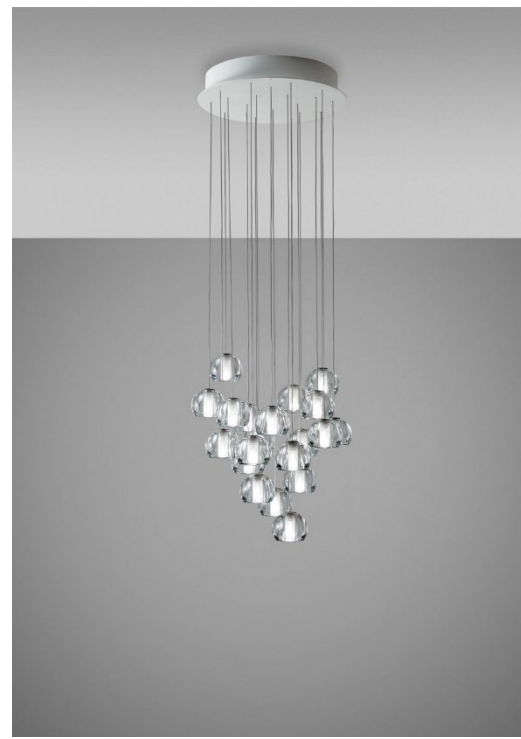
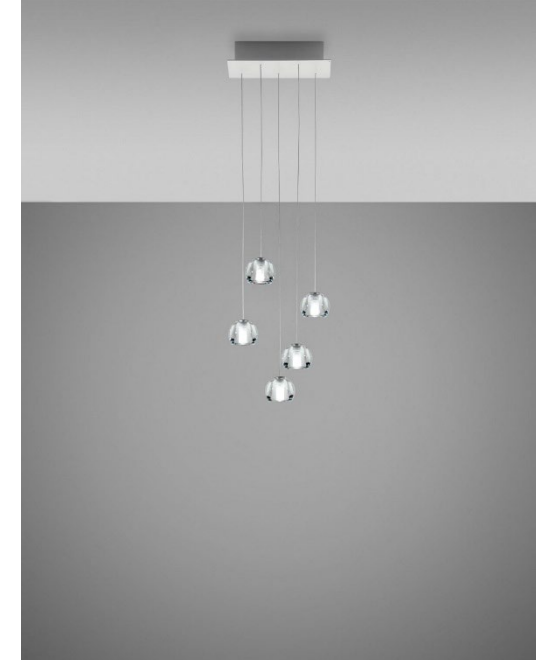
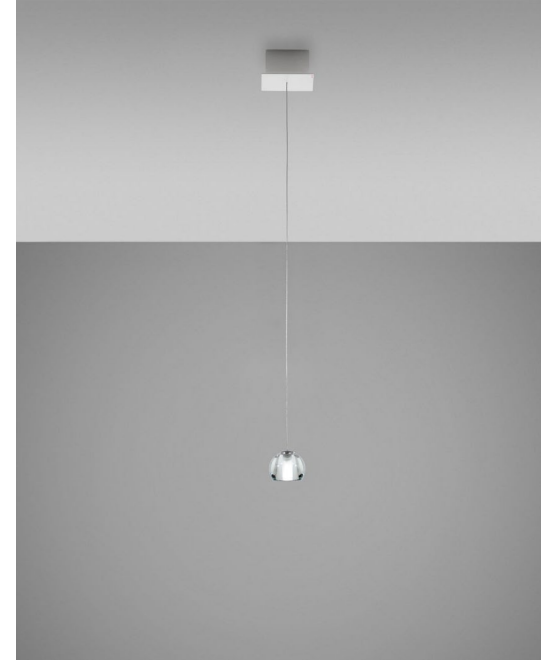
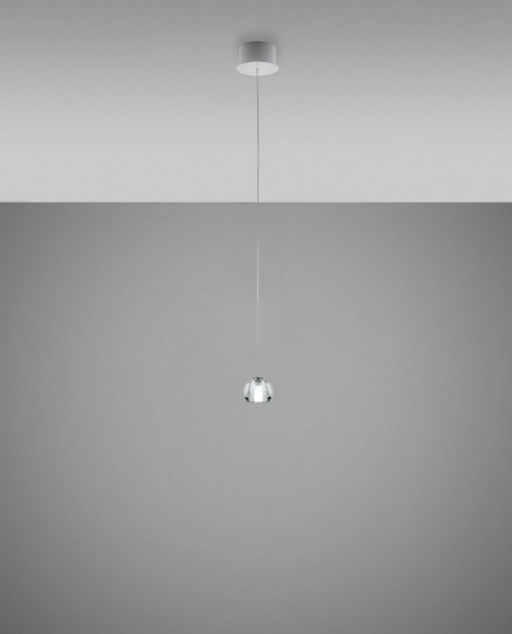
Commercial Office Building
Private Client



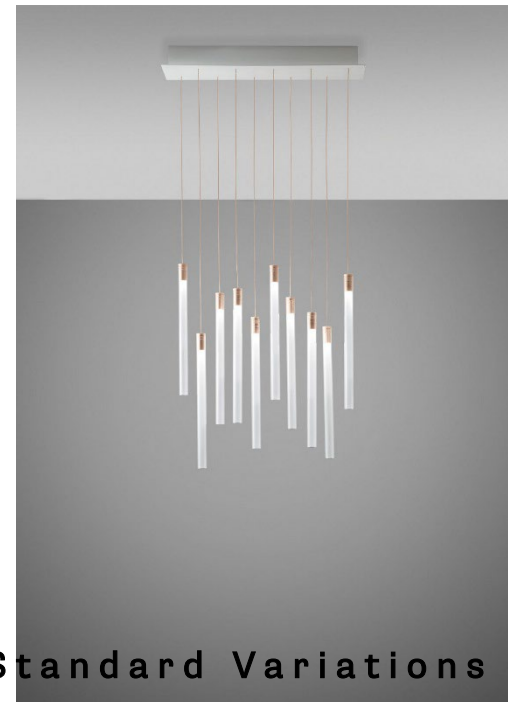
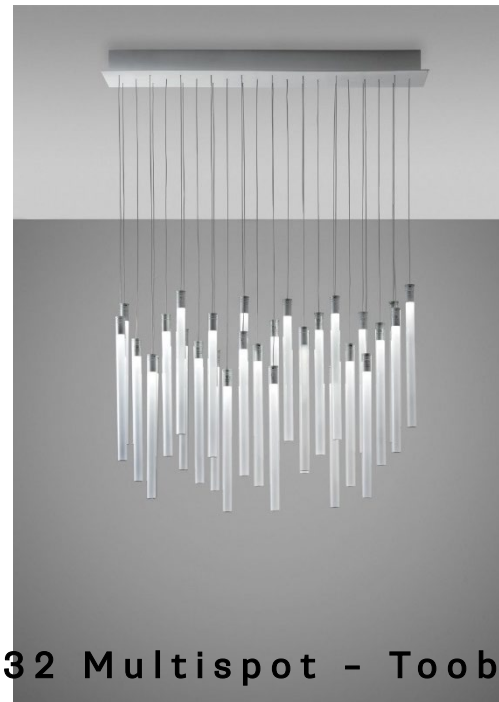
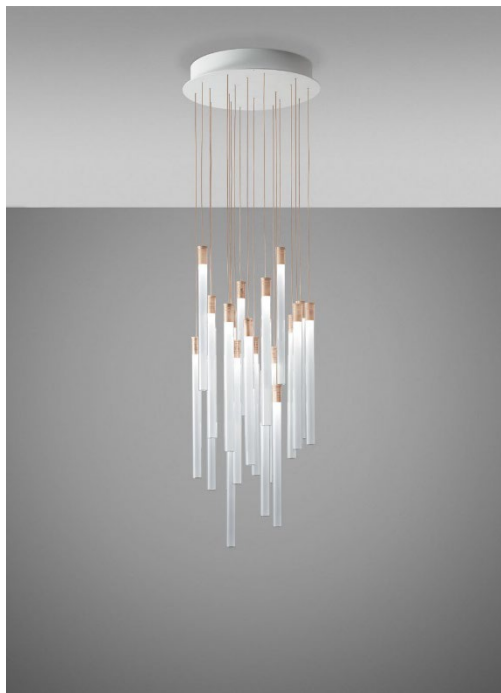
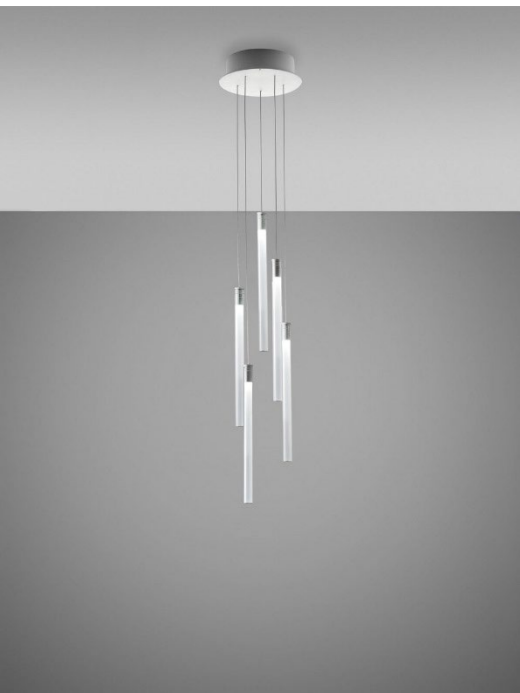
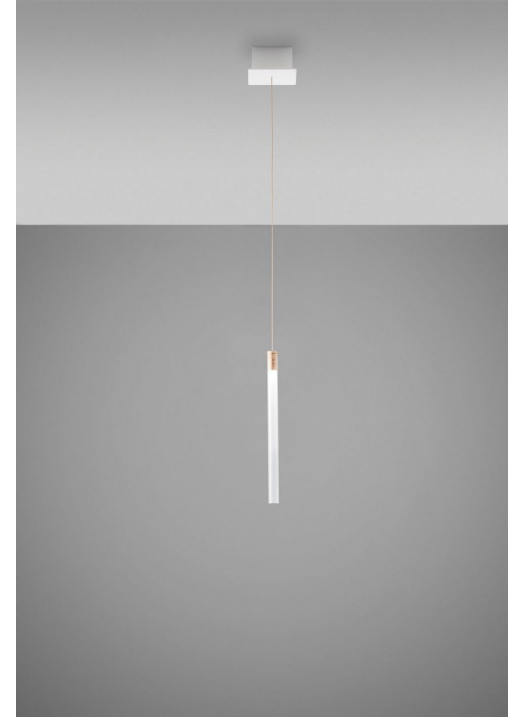
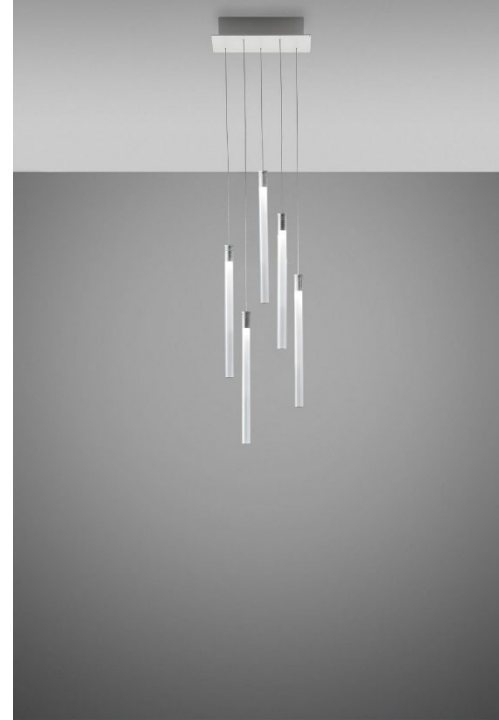
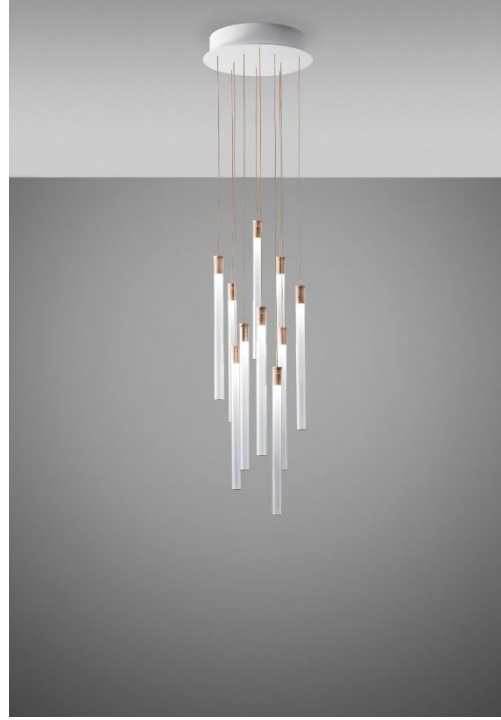
**Boutique Hotel
Alhambra**
-
Mali Lošinj, Croatia
Dean Skira

Photography
by Hrvoje Serdar






F32 Multispot - Beluga - Standard Variations



F32 Multispot - Tooby - Standard Variations



 **Fabbian**

For more information contact
Fabbian USA
www.fabbian.us
307 W38th St. Ste 1103
New York, NY 10018 USA
sales@fabbian.com

Revised 6-9-23