

**:Fabbian**



*FABBIAN DECORATIVE*

F27 Aérostat



## Company overview.

Established in 1961 in the Venetian countryside, Fabbian has always been one of the main points of reference in the decorative lighting appliances' market segment, with products mostly designed and manufactured for private residences and contract works.

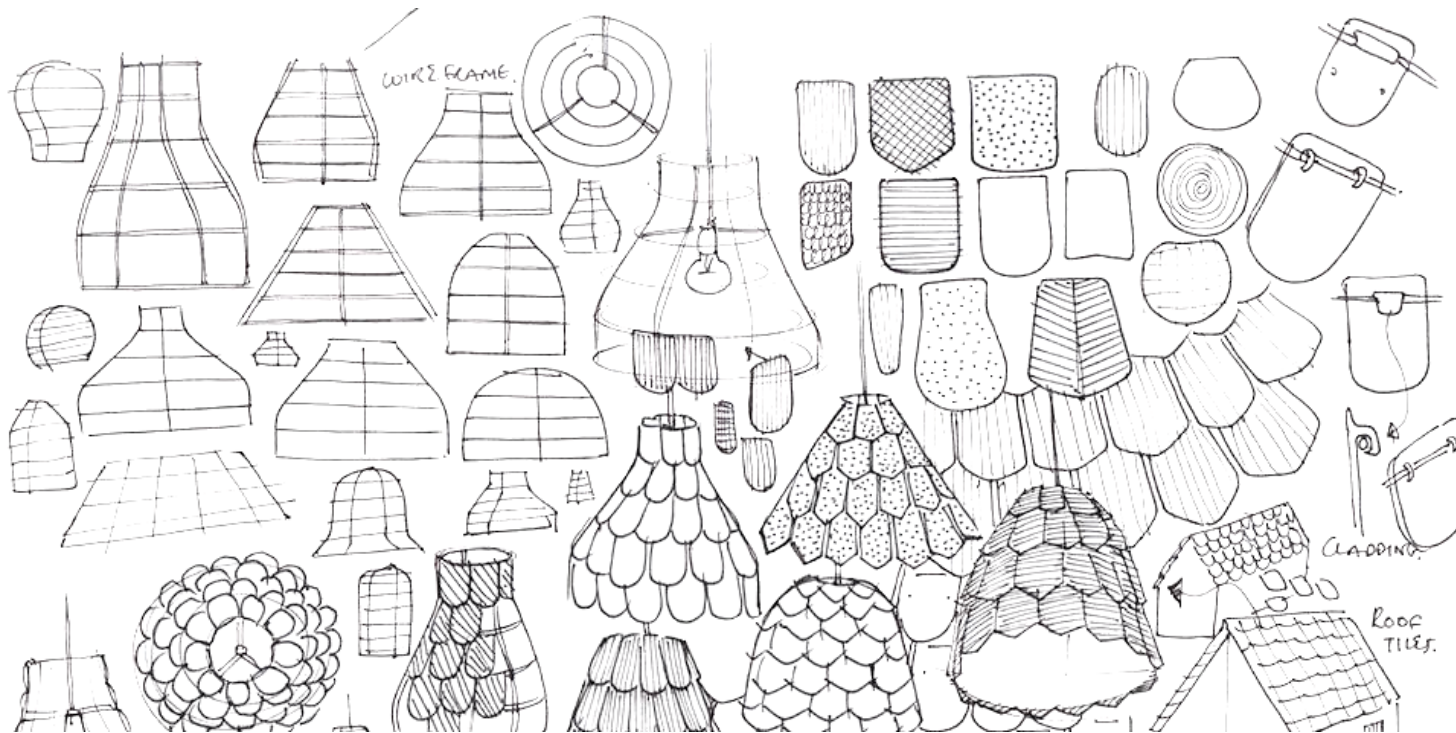
This aspect, together with the highest Italian craftsmanship tradition and the finest quality, has always been internationally recognized by architects as well as by the interior and lighting design communities worldwide.



## Company overview.

The endless research on new materials, trends, and aesthetics has always been combined with market demands and new business opportunities.

From the very beginning to the design application, the product life cycle is strictly controlled to make sure that each light fixture meets the highest quality expectations and safety requirements.



These components give Fabbian products a vast and diversified array of inspirations and styles, which is also ensured by yearly prestigious collaborations with well-renowned and emerging designers.



## COMPANY PROFILE



### North America.

For the North America market, Fabbian USA recently opened a new office in the world's capital of design, **New York City**, just blocks from Time Square, after 17 years in other locations.

### Company structure.

Proudly headquartered in Castelmino di Resana, in the **Venetian Countryside**, the company has an international outreach.

From **Venice**, it manages directly the European region, while it distributes the products through agents or importers in the other macro-geographical areas (Greater China, Russia, South and East Asia, South America, GCC countries, Northern Africa).



## Designers.

Fabbian has collaborated with some of the most prestigious designers throughout the world to create unique elements for your home and business.



A. SAGGIA &  
V. SOMMELLA



AFRA E TOSIA  
SCARPA



ALBERTO APOSTOLI



ALBERTO TORSELLO



FORMFJORD



FRANCESCO  
LUCCHESI



GIAMPIERO DERAÏ



GIAN PAOLO CANOVA



MATALI CRASSET



MATHIEU  
LEHANNÉUR



NICOLA DESIGN



NICOLA GARDIN-  
ROGER ZANON



ALESSANDRA  
BALDERESCHI



ALI SIAHVOSHI



BARTEK MEJOR



BENJAMIN HUBERT



GIGI ROSSI



GIO MINELLI



GUILLAUME  
DELVIGNE



J. DELLA FONTANA  
DZU



PAMIO DESIGN



PAOLO DE LUCCHI



PELLEGRINI+MENGATI  
DESIGN



PIOSTITO TOSO



BRIDGEWELL  
CONSULTING LTD



CONSTANCE GUISSSET



D. BUSATO &  
G. GICCARÈSE



DESIGNZAGATO



KARIM RASHID



LAGRANJA DESIGN



LORENZO TRUANI



LUCA SCACCHETTI



PROSPERO RASULO



RENATO MONTAGNER



STUDIO FUTURA



TIZIANO MAFFIONE



DOMPIER&PISONI



FE DESIGN



FEDERICA BUSANI



FLYNN TALBOT



LUCIE KOLDOVA



MARC SADLER



MARY PAVIN



MASSIMO&MARZIA  
SACCONI



VIM & VIGOR



VITTORIO MASSIMO



### Trade Shows & Events.

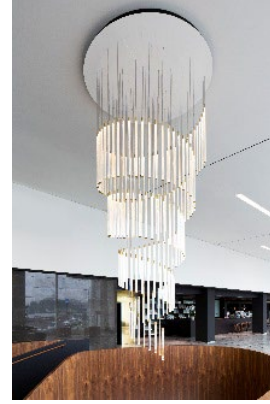
Fabbian takes part in the world's most relevant trade show dedicated to light, EUROLUCE, in Milan, every two years, with a massive booth to showcase new collections and best seller products. Other important dates in the Fabbian's calendar are Stockholm Furniture & Light Fair, WantedDesign Manhattan, and Sleep London.





# FABBIAN BREADTH OF LINE

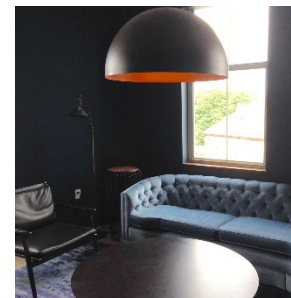
## FABBIAN CUSTOM



Customizable &  
Unique Art & Large  
scale products

Client Specific  
Custom Fixture  
Development

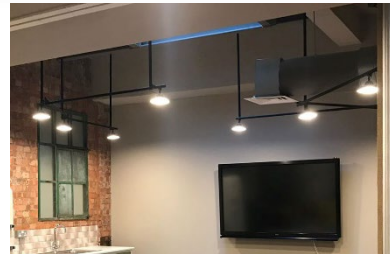
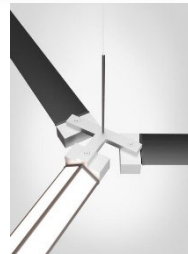
## FABBIAN DECORATIVE



Both Glass and Non-  
Glass Feature  
Elements.

Varying Styles,  
uniquely Italian for  
the specified project

## FABBIAN TECH



Italian Architectural  
Downlights, Linear, &  
Systems

## F27 Aérostat

Since its launch, F27 Aérostat has been favored by designers for its unique diffuser shape reminiscent of a contemporary schoolhouse design style.

The Guillaume Delvigne designed collection offers universal appeal to both modern and more traditional design styles.

Aérostat is a complete collection including pendants, wall/ceiling fixtures, table and floor lamps, all realized in glossy white blown glass and offered with or without metal base.

Aérostat's range of types and lamp choices make this a go to collection for residential and commercial projects.





## F27 Aérostat - The Glass

Aérostat's foundation is its blown glass diffusers.

Each glass is created by a team of master craftsman and goes through many steps to become an Aérostat.



See an Aérostat glass take shape from start to finish; Click [here](#) for the video.

## F27 Aérostat - The Glass

Aérostat is created through a Spinning Mold Glass-blowing technique

### Step 1

A glob of molten glass is gathered on the end of the blowpipe, and over 5 to 10 minutes of time, it is worked into a round shape.

Multiple layers of glass are added to create the color and mask lamp shadow.

The continuous working of the glass removes all air pockets and seeding that can occur in more imperfect product.

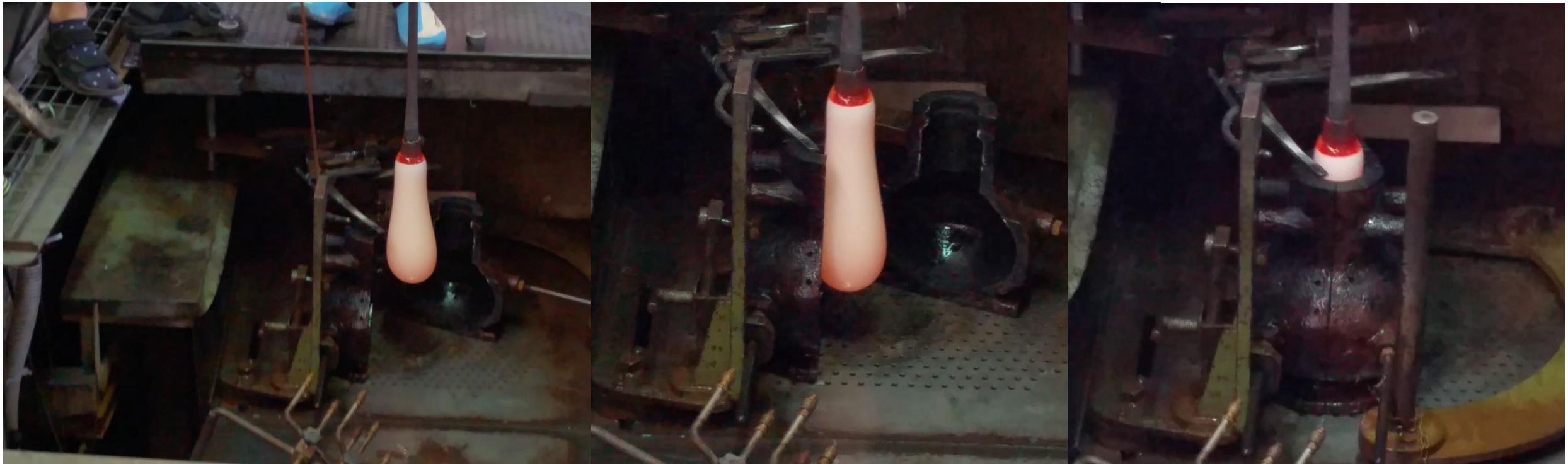




## F27 Aérostat - The Glass

### Step 2

The glass blower, or Gaffer, slowly and expertly blows and rotates the globe into the size and shape needed to fit into the mold.



## F27 Aérostat - The Glass

### Step 3

The gaffer then blows through the tube while spinning the blowpipe between his hands to create a centrifugal force used in a symmetric glass structure.

The inside of the mold is wet and releases steam from the side holes and top of the mold.





## F27 Aérostat - The Glass



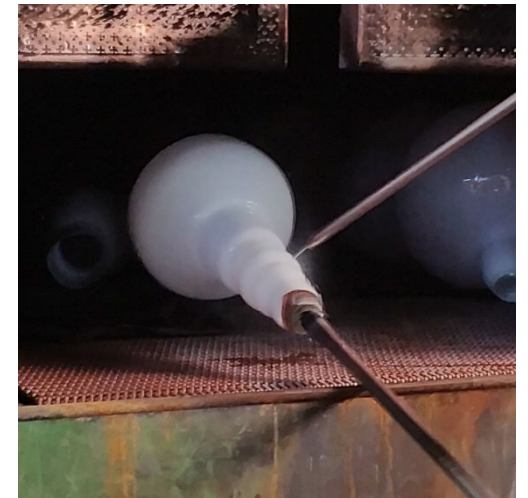
### Step 4

The glass is forced against the inner surfaces of the mold and assumes its shape, together

To see the process, watch the [Aérostat Video](#)!

### Step 5

Inspection and Annealing



## F27 Aérostat - The Final Results



Photography by Instagram Users

- studioguillaumedelvigne
- lampefeber\_conceptstore
- sisustusid
- insidepr
- laurajuulia
- gineico\_lighting
- punktzona.ch

@fabbianlighting  
#fabbianlighting



## F27 Aérostat - Pendants

Aérostat pendants are offered in three sizes and can be ordered with a medium based socket or with an integral LED. Integral LED sources are Triac dimmable.

### LED Models:

**F27 A01A 01** – 8.9" Diameter; 8.5W, 3000K, 800 Lumens, CRI >80 LED

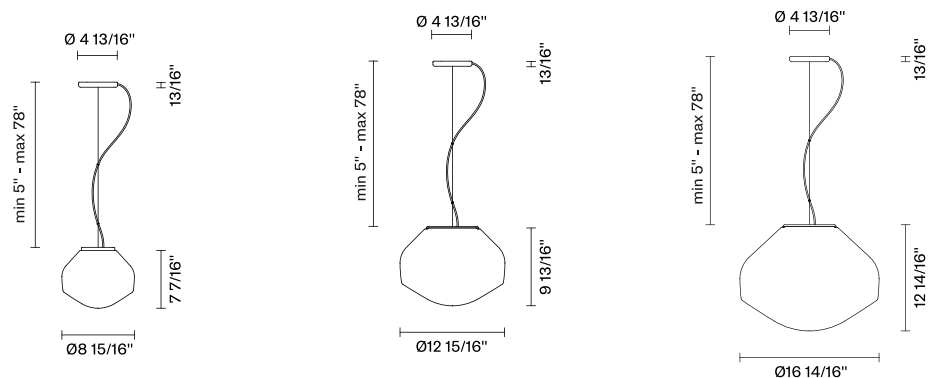
**F27 A03A 01** – 12.9" Diameter; 17W, 3000K, 1850 Lumens, CRI>80 LED

**F27 A05A 01** - 16.8" Diameter; 17W, 3000K, 1850 Lumens, CRI>80 LED

### E26 Models:

**F27 A07A 01** – 12.9" Diameter; 1 X 150W Max E26 Incandescent or retrofit lamp

**F27 A09A 01** – 16.8" Diameter; 1 x 250W Max E26 Incandescent or retrofit lamp





**F27 Aérostat - The Range - Pendants**





Bookhamptons

— East Hampton, New York

Fanny Abbes, *The New Design Project*

## F27 Aérostat -Wall/Ceiling

Aérostat wall or ceiling lights are offered in three sizes and can be ordered with a medium based socket or with an integral LED.

Integral LED sources are Triac dimmable.

### LED Models:

**F27 G01A 01** – 8.9" Diameter; 8.5W, 3000K, 800 Lumens, CRI >80 LED

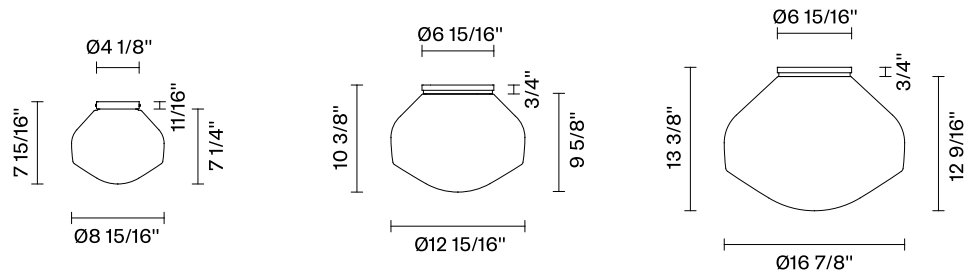
**F27 G03A 01** – 12.9" Diameter; 17W, 3000K, 1850 Lumens, CRI>80 LED

**F27 G05A 01** – 16.8" Diameter; 17W, 3000K, 1850 Lumens, CRI>80 LED

### E26 Models:

**F27 G07A 01** – 12.9" Diameter; 1 X 150W Max E26 Incandescent or retrofit lamp

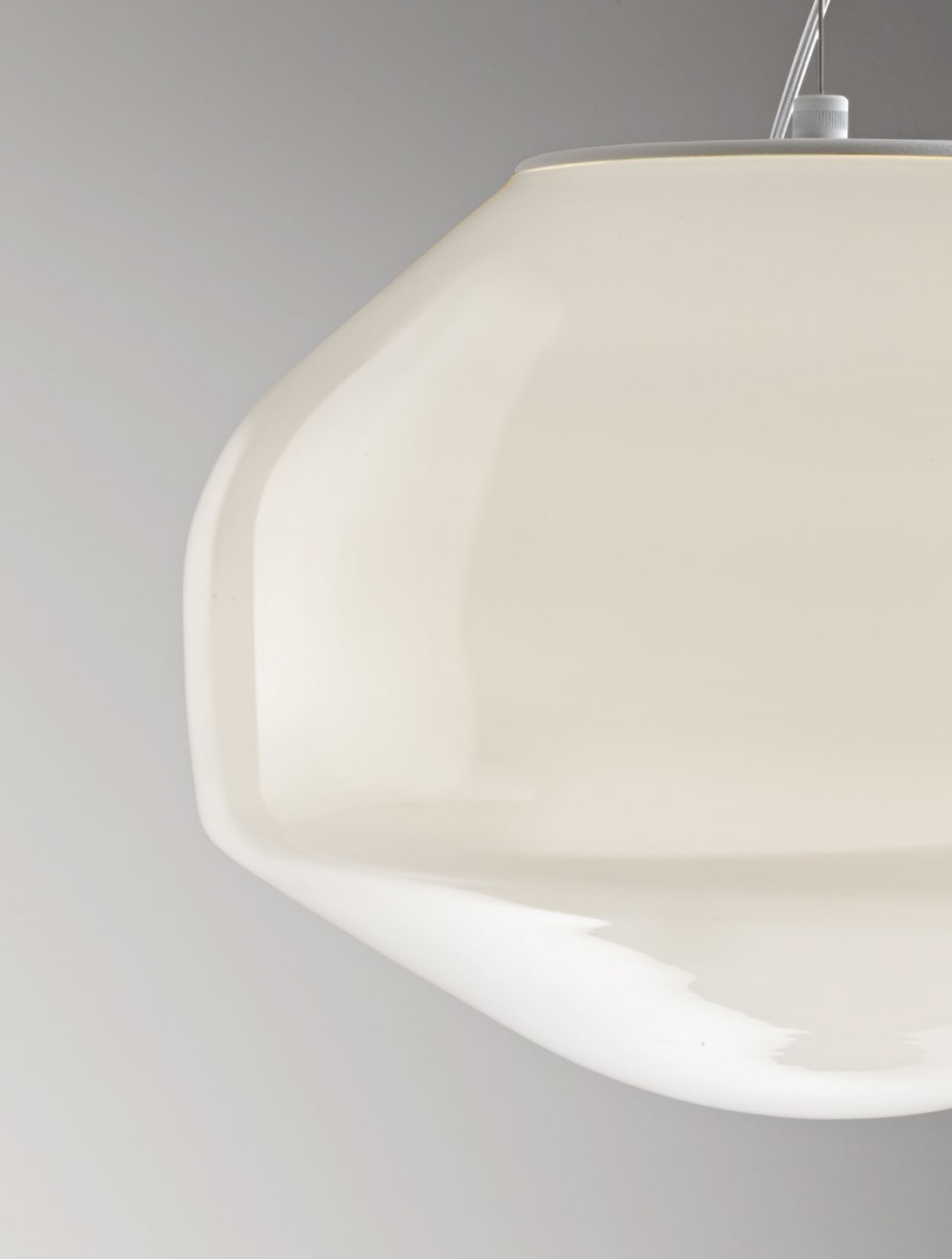
**F27 G09A 01** – 16.8" Diameter; 1 x 250W Max E26 Incandescent or retrofit lamp







F27 Aérostat - The Range - Ceiling





## F27 Aérostat with Metal Base- Pendants

Aérostat with Metal Base pendants are offered in two sizes and are equipped with a medium based socket and used with incandescent, retrofit LED or CFL lamps.

The metal base adds a decorative element and is offered in three finishes: brass-plated, black chrome or copper.

Canopies are in the corresponding metal finish.

### Brass Models:

**F27 A11A 19-** Brass Plated, 12.9"Diameter, 1 X 150W Max E26 Incandescent or retrofit

**F27 A13A 19-** Brass Plated, 16.8"Diameter, 1 X 250W Max E26 Incandescent or retrofit

### Black Chrome Models:

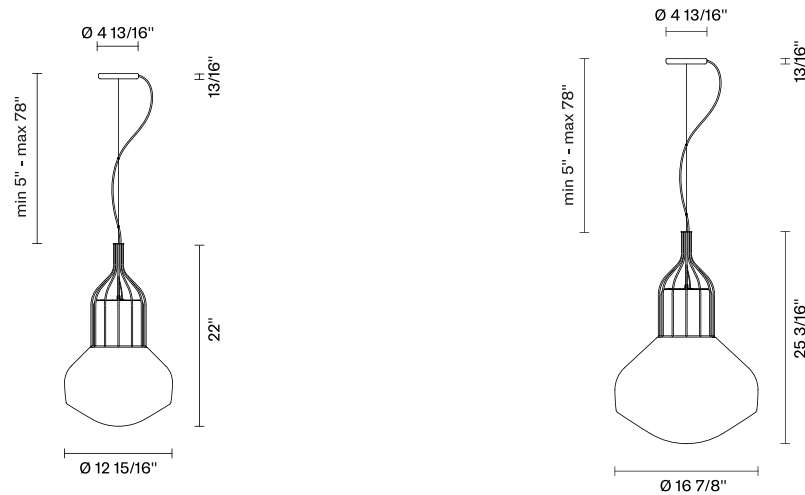
**F27 A11A 24-** Black Chrome, 12.9"Diameter, 1 X 150W Max E26 Incandescent or retrofit

**F27 A13A 24-** Black Chrome, 16.8"Diameter, 1 X 250W Max E26 Incandescent or retrofit

### Copper Models:

**F27 A11A 41-** Copper, 12.9"Diameter, 1 X 150W Max E26 Incandescent or retrofit

**F27 A13A 41-** Copper, 16.8"Diameter, 1 X 250W Max E26 Incandescent or retrofit





F27 Aérostat -The Range - Pendants



## F27 Aérostat with Metal Base-Table Lamps

Aérostat with Metal Base Table Lamps are offered in two sizes and are equipped with a medium based socket and used with incandescent, retrofit LED or CFL lamps.

The metal base supports the glass and is offered in three finishes: brass-plated, black chrome or copper.

Lamps are equipped with inline on/off switch. Lamps can be dimmed from Triac wall dimmers (when using dimmable lamp type).

### Brass Plated **Models:**

**F27 B01A 19-** Brass plated, 8.9"Diameter, 1 x 60W E12 incandescent or retrofit

**F27 B03A 19-** Brass Plated, 12.9"Diameter, 1 X 150W Max E26 Incandescent or retrofit

### Black Chrome **Models:**

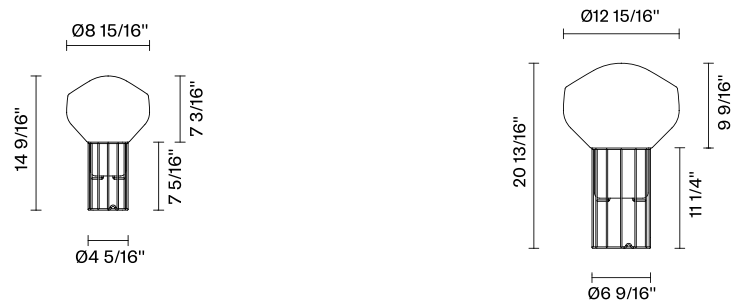
**F27 B01A 24-** Black chrome, 8.9"Diameter, 1 x 60W E12 incandescent or retrofit

**F27 B03A 24-** Black Chrome, 12.9"Diameter, 1 X 150W Max E26 Incandescent or retrofit

### Copper **Models:**

**F27 B01A 41-** Copper, 8.9"Diameter, 1 x 60W E12 incandescent or retrofit

**F27 B03A 41-** Copper, 12.9"Diameter, 1 X 150W Max E26 Incandescent or retrofit





F27 Aérostat - The Range - Table Lamps



## F27 Aérostat with Metal Base-Floor Lamps

Aérostat with Metal Base Floor Lamps are offered in two sizes and are equipped with a medium based socket and used with incandescent, retrofit LED or CFL lamps.

The flared metal base supports the glass and is offered in three finishes: brass-plated, black chrome or copper.

Lamps are equipped with inline on/off switch. Lamps can be dimmed from Triac wall switch (when using dimmable lamp type).

### Brass Plated **Models:**

**F27 C01A 19-** Brass Plated, 12.9"Diameter, 1 X 150W Max E26 Incandescent or retrofit

**F27 C03A 19-** Brass Plated, 16.8"Diameter, 1 X 250W Max E26 Incandescent or retrofit

### Black Chrome **Models:**

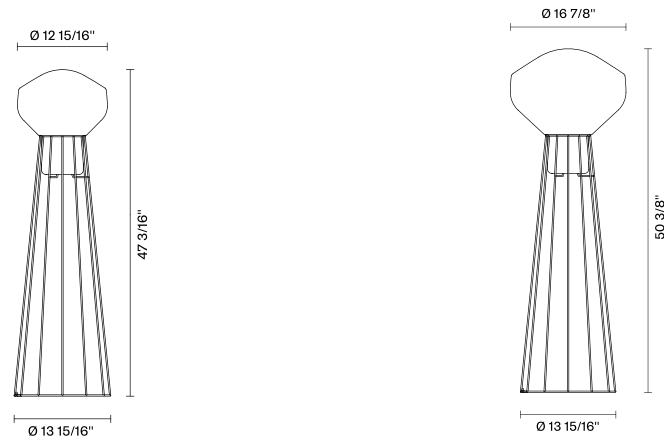
**F27 C01A 24-** Black Chrome, 12.9"Diameter, 1 X 150W Max E26 Incandescent or retrofit

**F27 C03A 41-** Black Chrome, 16.8"Diameter, 1 X 250W Max E26 Incandescent or retrofit

### Copper **Models:**

**F27 C01A 41-** Copper, 12.9"Diameter, 1 X 150W Max E26 Incandescent or retrofit lamp

**F27 C03A 24-** Copper, 16.8"Diameter, 1 X 250W Max E26 Incandescent or retrofit





F27 Aérostat - The Range - Floor Lamps



## F27 Aérostat - Finishes

Aérostat with metal bases are offered in 3 luxe finishes. Select from brass plated, black chrome or copper.



Brass Plated



Black Chrome



Copper





# F27 Aérostat - Installation

## Aérostat Pendant Mounting Installation:

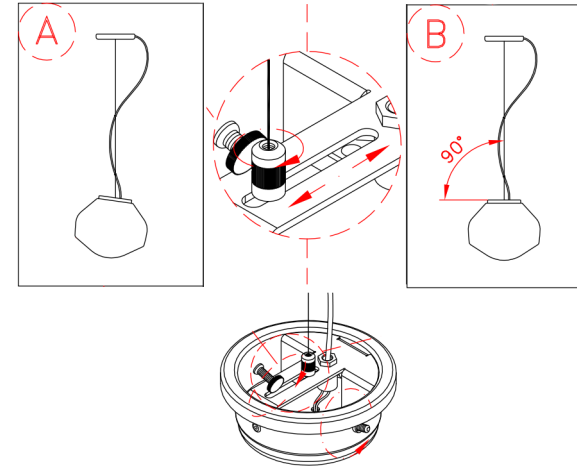
Aérostat Pendants include leveling mechanisms to keep the glass level when installing.

- Cables can be bound together with the included clear bands
- Eliminates long balancing rod atop fixtures for a cleaner aesthetic, especially in larger scale fixtures.

## Options:

- Wipe down cover plate (Optional for 12"+ models)

Optional Wipe-Down Coverplate  
for larger LED pendants



Small pendants  
leveling stem



Leveling Mechanism  
for 12"+ pendants

## F27 Aérostat - Installation

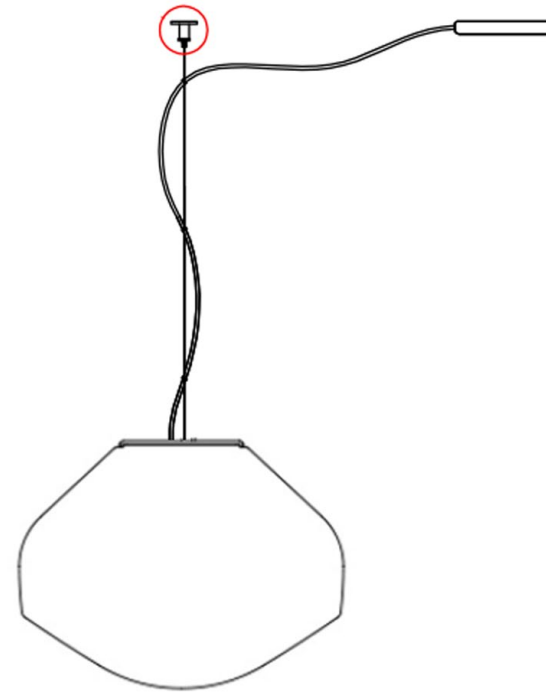
### Pendant Alternate Mounting:

- Offset mounting hardware is included with pendants that have separate support cable allowing j-box to be located away from fixture.
- Hardware can be used with or without the cover disk.

### Benefits:

- Simplifies installation for the following conditions:
  - Sloped ceiling installations
  - Through ceiling installations (ie. Slatted ceilings)
  - Single J-box can now feed multiple pendants
  - If power is in a non-visible area, no canopy niceties to manage

## KIT DI DECENTRAMENTO DECENTRALIZATION KIT



Offset Mounting Hardware  
Shown with and without disk



Chelsea Private  
Residence

—  
New York, New York

Fanny Abbes, *The New  
Design Project*













For more information contact:  
**Fabbian USA**  
[www.fabbian.us](http://www.fabbian.us)  
307 W38th St. Ste 1103  
New York, NY 10018 USA  
[sales@fabbian.com](mailto:sales@fabbian.com)

 **Fabbian**