

XY&Z

Product Design Consultant **Gensler**



XY&Z F63

:Fabbian

A Design Evolution in Lighting



A system like no other, XY&Z F63 is a 3-dimensional conversation between artistry, design, technology, and beauty.

Designed for the unique commercial interiors space, XY&Z is an ideal decorative and functional lighting source in the open plan environment in place of traditional downlight and pendant sources.

XY&Z F63 also provides tremendous aesthetic and lighting value for gathering spaces such as hospitality, restaurant, amenities areas, and boutique retail spaces to create a sublime design experience.

XY&Z F63

Fabbian



XY&Z F63

Inspired by nature's ability to propagate from a single seed, XY&Z F63 encourages a proliferation of light from a single point to many varied elements. Just as acorns create forests, honeycombs expand from a single cell, or grapes proliferate through an ever-expanding vine, the XY&Z light elements evolve and grow throughout the building bringing light to all areas at any and every plane.



Our artisan glassmakers from Veneto, Italy, have created a unique multi-layered glass element with a minimal integral light source design. The fixture jewel is composed entirely of glass and is suspendable at varying heights in an organic or diamond grid. Each element is suspended by (2) cords up to 15' long to mounting canopies located on the ceiling or walls in a symmetrical or asymmetrical distribution!



XY&Z F63

 Fabbian



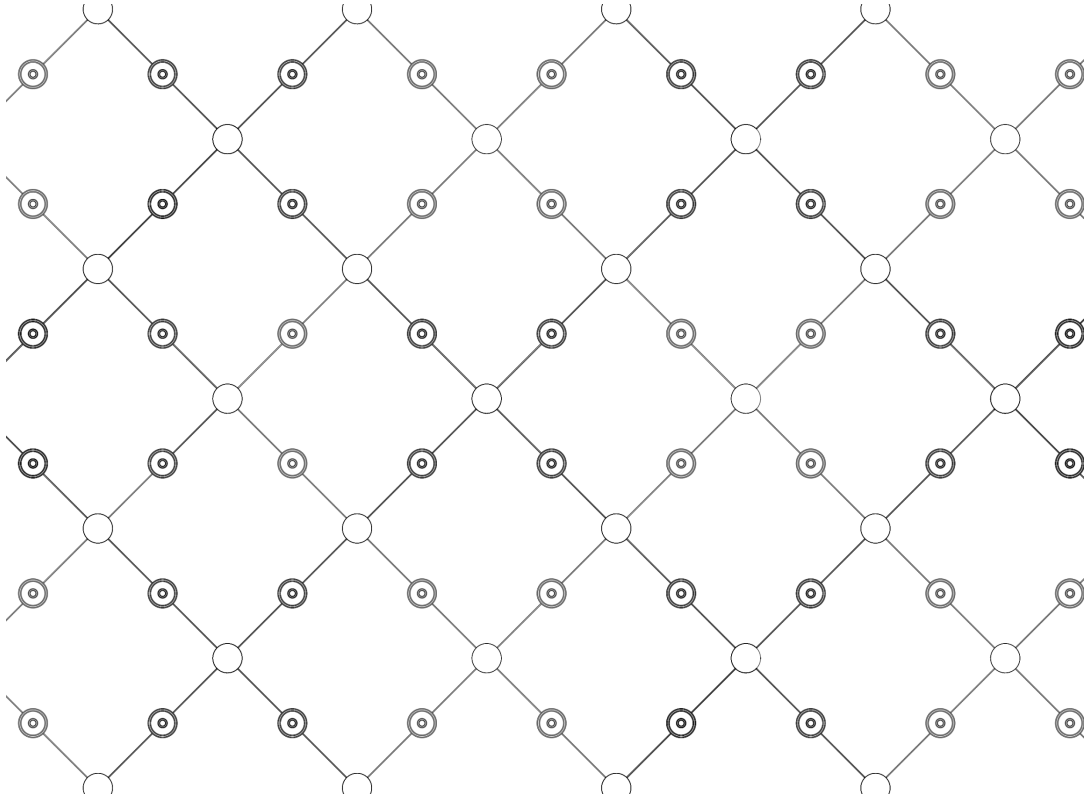
A clear smooth glass surrounds the internal glass. The internal glass is offered in a selection of rich jewel tone colors and handcrafted texture combinations.

Colors include bronze, clear, frosted, licorice, plum and sea glass.

Textures are aqua (waves), balloton (diamonds), rigadin (stripes), and slick (smooth).

XY&Z F63

:Fabbian



XY&Z F63

XY&Z pendants are designed to connect and work together. The mounting canopies, available in White or Black, fasten directly to a 4" Octagonal Junction box. Each canopy provides connection for up to 4 light legs.

The system is offered as 24V LED with remote driver(s) or E12 retrofit. Up to 13 fixtures can be connected to a single 24V LED driver and can dim by any control method.



XY&Z F63

The XY&Z F63 Design Evolution in Lighting was years in the making, starting with a simple project concept and resulting today in a unique new way to light a building.

Fabbian collaborated with **Gensler** throughout this process, serving as the product design consultant for the XY&Z F63 Collection.

Product Design
Consultant

Gensler

*In the genesis of 21st-century architecture and design,
the dawn of a new day also brings with it a new light.*

:Fabbian

Technical Specifications

XY&Z F63



 **Fabbian**

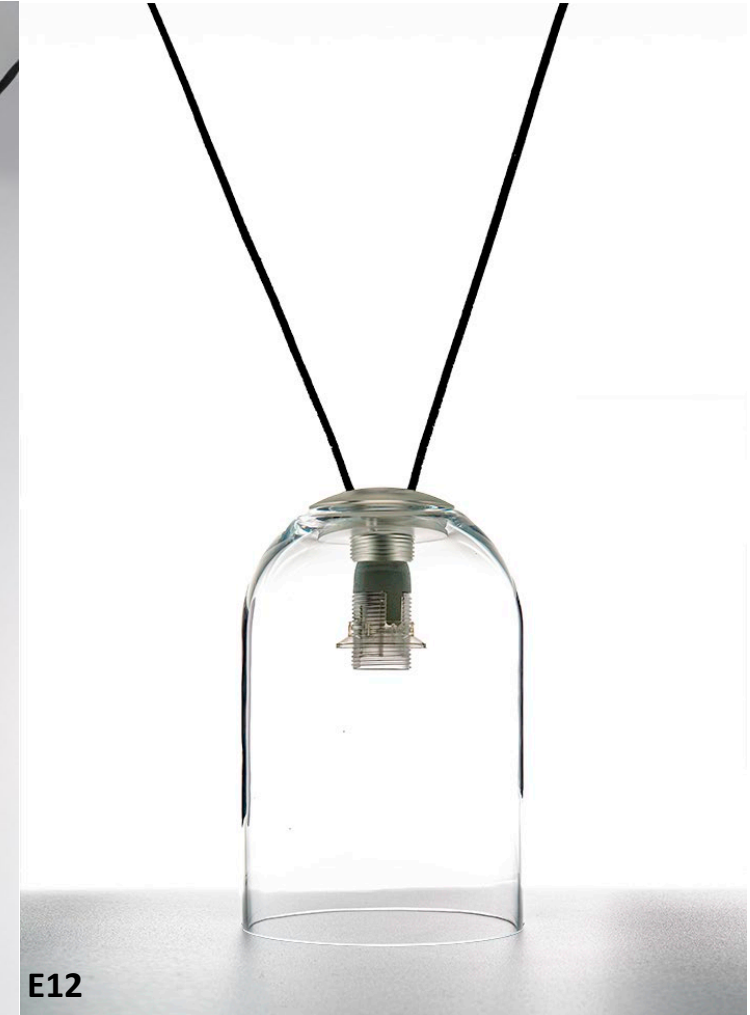
Technical Specifications

Details:

- XY&Z is a configurable system
- **Select lamp type** – Integral 24V LED With choice of color temperature or E12



LED



E12

XY&Z F63

Technical Specifications

Details:

- XY&Z is a configurable system
- **Select internal glass** - Choice of fourteen color/texture combinations.

Slick

Clear, Frosted, Licorice or
Sea Glass



Rigadin

Clear, Licorice or Bronze



Baloton

Clear, Frosted, Licorice,
Plum or Sea Glass



Aqua

Plum or Bronze

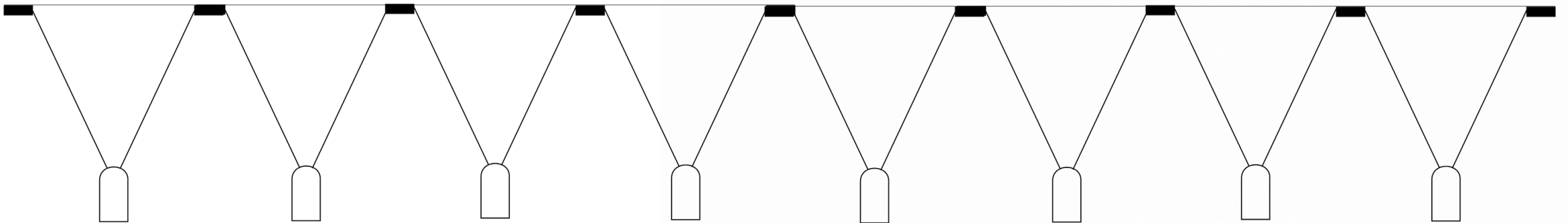


XY&Z F63

Technical Specifications

Details:

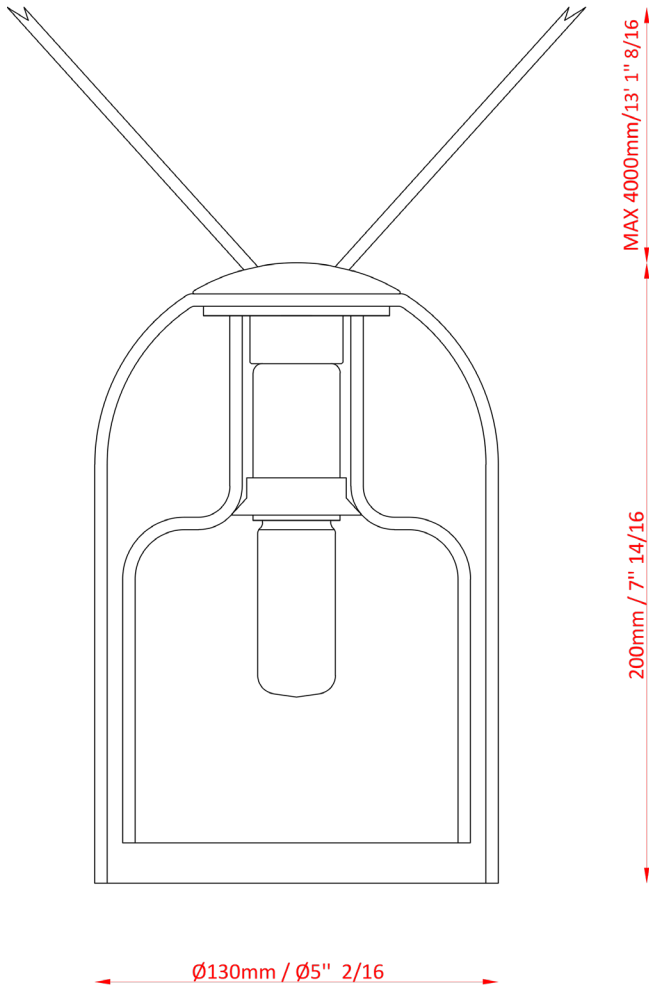
- XY&Z is a configurable system
- Canopies offered in white, or black finish.
- Each canopy can support maximum 4 lighting heads
- Custom RAL or Pantone color canopies available



XY&Z F63

:Fabbian

Technical Specifications



E12

XY&Z F63

Light Source and Electrical:

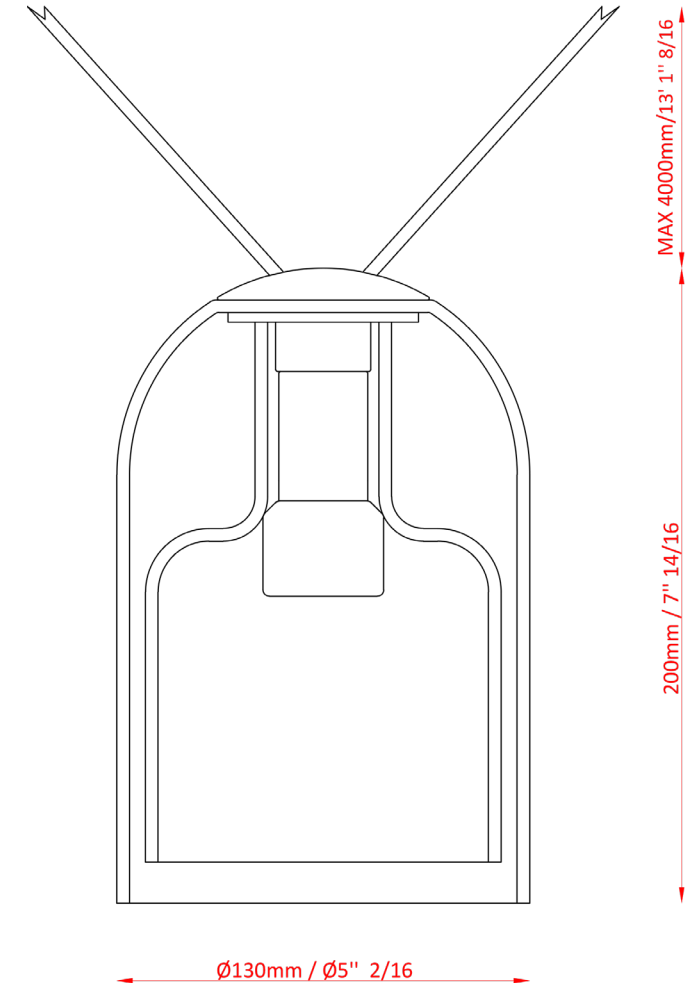
E12:

- 12Watt Max 120V only
- Dimming- lamp dependent

OR

LED:

- 24V integral LED
- Choice of 2700K, 3000K, 3500K, or 4000K color temperature
- 6W 90+CRI
- 120V or 277V
- ELV or 0-10V Dimming standard
- Remote driver required



LED

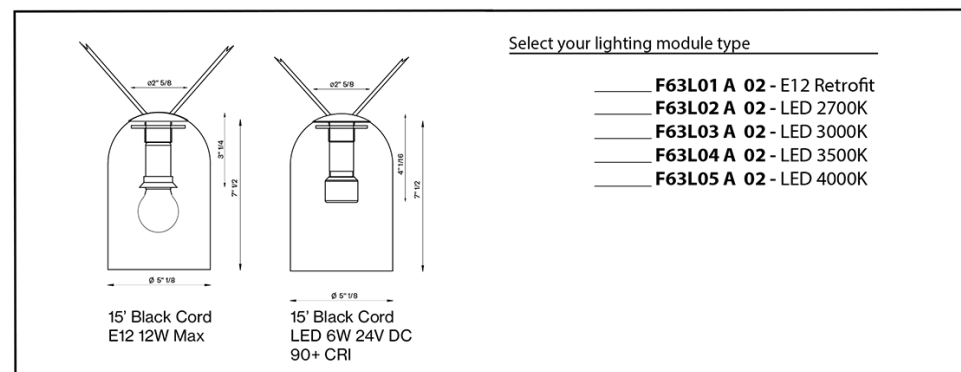
Create your Bill of Materials

A step-by-step guide to designing your XY&Z F63 system from configuring your fixtures, planning your layout, and creating a Bill of Materials

Step 1: Create the fixtures. Select your fixture type (E12 or LED) and then select your interior glass type. Systems can include multiple colors and patterns of glass. When using numerous fixture types, it is helpful to assign labels (ie. "A", "B", "C"...)

1. Light Module with External Glass

Each fixture requires one pendant body- select from incandescent or LED



Fixture A:

Light Source Code: _____

Internal Glass Code: _____

Fixture B:

Light Source Code: _____

Internal Glass Code: _____

Fixture C:

Light Source Code: _____

Internal Glass Code: _____

Fixture D:

Light Source Code: _____

Internal Glass Code: _____

Fixture E:

Light Source Code: _____

Internal Glass Code: _____

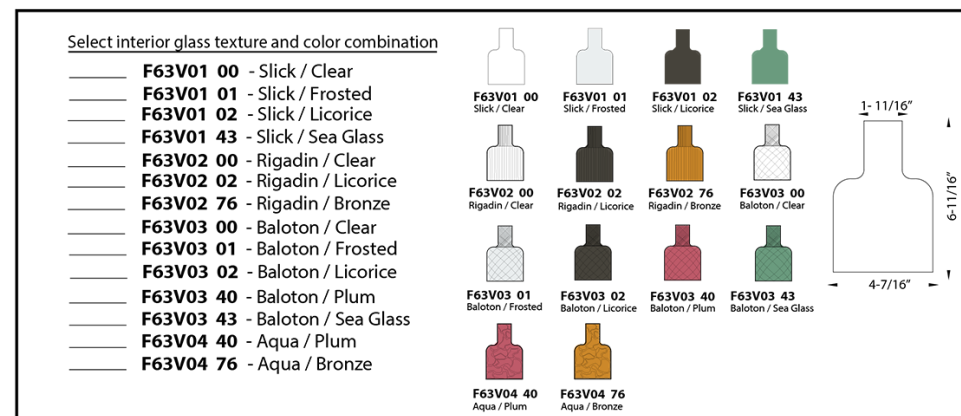
Fixture F:

Light Source Code: _____

Internal Glass Code: _____

2. Internal Glass

Each fixture requires an interior glass -select texture and color combination



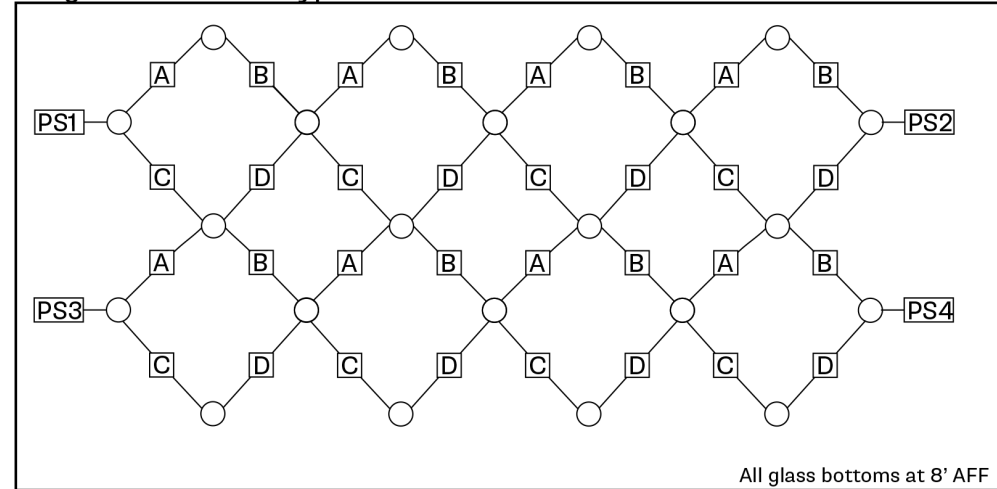
XY&Z F63

Fabbian

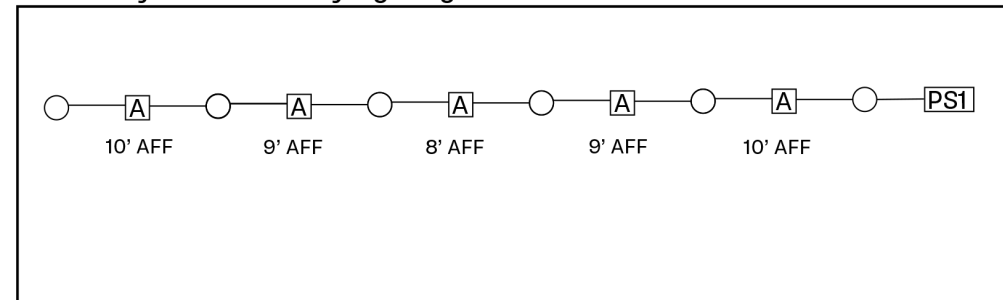
Create your Bill of Materials

Sample Layouts - XY&Z can be laid out in many different configurations, here are just a few examples of possibilities

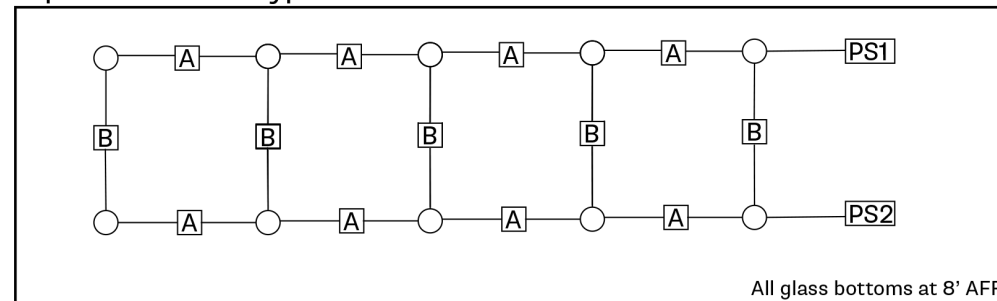
Diagonal with four types of fixtures



Linear layout with varying heights



Square with two types of fixtures



Fixture height formula

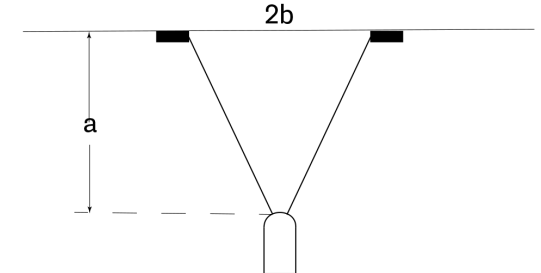
Standard Fixture cord length is 15'. Ensure your design will work with the standard cord length:

$$(\text{ceiling height} - \text{top of fixture height})^2 + \left(\frac{\text{canopy spacing}}{2}\right)^2 < 225$$

Examples

If a=5' and 2b=10', then the cord length=50 (7') ✓

If a=10' and 2b=15', then the cord length=156 (12.5') ✓



Create your Bill of Materials

Step 2: Sketch layout - Each fixture requires two canopies (Each canopy can support a maximum of 4 fixtures)



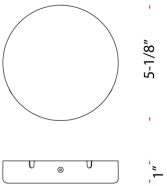
Create your Bill of Materials

Step 3: Select canopies and drivers (24V LED only)

1. Canopy

Each fixture requires two canopies (Each canopy can support a maximum of 4 fixtures)

Select canopy color	
<input type="checkbox"/>	F63M01 A 02 - Black
<input type="checkbox"/>	F63M01 A 01 - White



2. Remote Drivers (for 24V LED systems)

Select remote driver for LED Light Source.

Model	Driver Type
<input type="checkbox"/> A55208	60W, 24V, 120V, ELV Dimming - Supports up to 8 fixtures
<input type="checkbox"/> A55209	96W, 24V, 120V, ELV Dimming - Supports up to 12 fixtures
<input type="checkbox"/> A55210	96W, 24V, 120-277V (UNV), 0-10V Dimming - Supports up to 12 fixtures

Step 4: Compile Bill of Materials for designed system

1. Number and type of fixtures	Quantity:____	Code:_____
2. Number and type of interior glass(es)	Glass 1: Quantity:____	Code:_____
	Glass 2: Quantity:____	Code:_____
	Glass 3: Quantity:____	Code:_____
3. Number and finish of canopies (each fixture needs two canopy connections)	Quantity:____	Code:_____
4. Number and type of driver(s)(if applicable)	Quantity:____	Code:_____













XY&Z F63 Revised 10.18.23

[Learn More!](#)

Fabbian

For more information contact:

Fabbian USA

www.fabbian.us

307 W38th St. Ste 1103

New York, NY 10018 USA

sales@fabbian.com