

A step-by-step guide to designing your XY&Z F63 system from configuring your fixtures, planning your layout, and creating a Bill of Materials

Step 1: Create the fixtures. Select your fixture type (E12 or LED) and then select your interior glass type. Systems can include multiple colors and patterns of glass. When using numerous fixture types, it is helpful to assign labels (ie. "A", "B", "C"...)

1. Light Module with External Glass

Each fixture requires one pendant body- select from incandescent or LED

Select your lighting module type

- ☐ **F63L01 A 02** - E12 Retrofit
- ☐ **F63L02 A 02** - LED 2700K
- ☐ **F63L03 A 02** - LED 3000K
- ☐ **F63L04 A 02** - LED 3500K
- ☐ **F63L05 A 02** - LED 4000K

2. Internal Glass

Each fixture requires an interior glass -select texture and color combination

Select interior glass texture and color combination

- ☐ **F63V01 00** - Slick / Clear
- ☐ **F63V01 01** - Slick / Frosted
- ☐ **F63V01 02** - Slick / Licorice
- ☐ **F63V01 43** - Slick / Sea Glass
- ☐ **F63V02 00** - Rigadin / Clear
- ☐ **F63V02 02** - Rigadin / Licorice
- ☐ **F63V02 76** - Rigadin / Bronze
- ☐ **F63V03 00** - Baloton / Clear
- ☐ **F63V03 01** - Baloton / Frosted
- ☐ **F63V03 02** - Baloton / Licorice
- ☐ **F63V03 40** - Baloton / Plum
- ☐ **F63V03 43** - Baloton / Sea Glass
- ☐ **F63V04 40** - Aqua / Plum
- ☐ **F63V04 76** - Aqua / Bronze

Fixture A:

Light Source Code: _____

Internal Glass Code: _____

Fixture B:

Light Source Code: _____

Internal Glass Code: _____

Fixture C:

Light Source Code: _____

Internal Glass Code: _____

Fixture D:

Light Source Code: _____

Internal Glass Code: _____

Fixture E:

Light Source Code: _____

Internal Glass Code: _____

Fixture F:

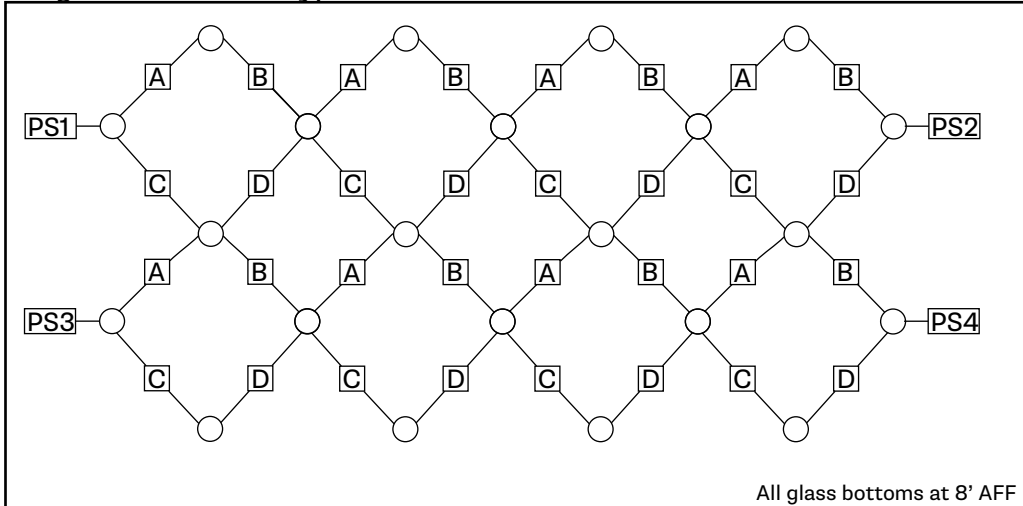
Light Source Code: _____

Internal Glass Code: _____

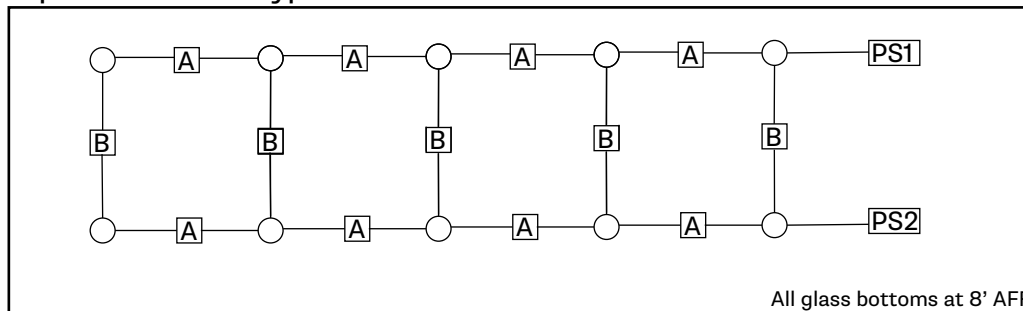
Sample Layouts

XY&Z can be laid out in many different configurations, here are just a few examples of possibilities

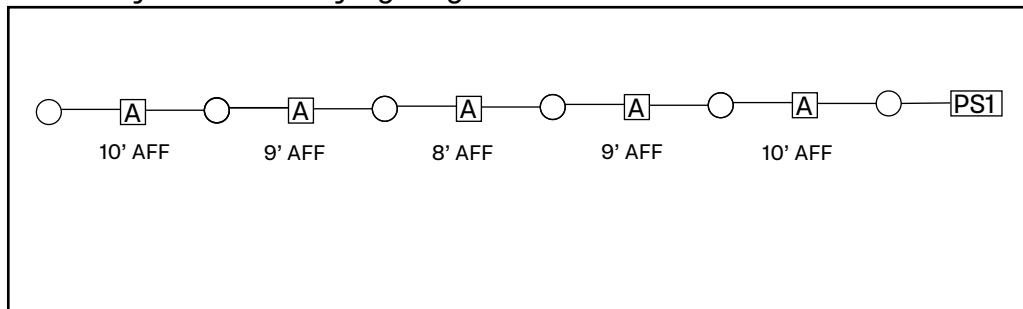
Diagonal with four types of fixtures



Square with two types of fixtures



Linear layout with varying heights



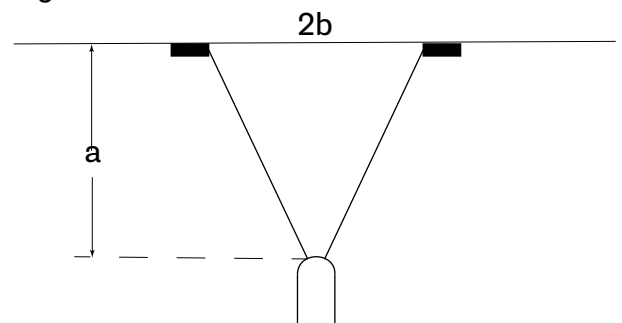
Standard Fixture cord length is 15'. Ensure your design will work with the standard cord length:

$$(\text{ceiling height} - \text{top of fixture height})^2 + \left(\frac{\text{canopy spacing}}{2}\right)^2 < 225$$

Examples

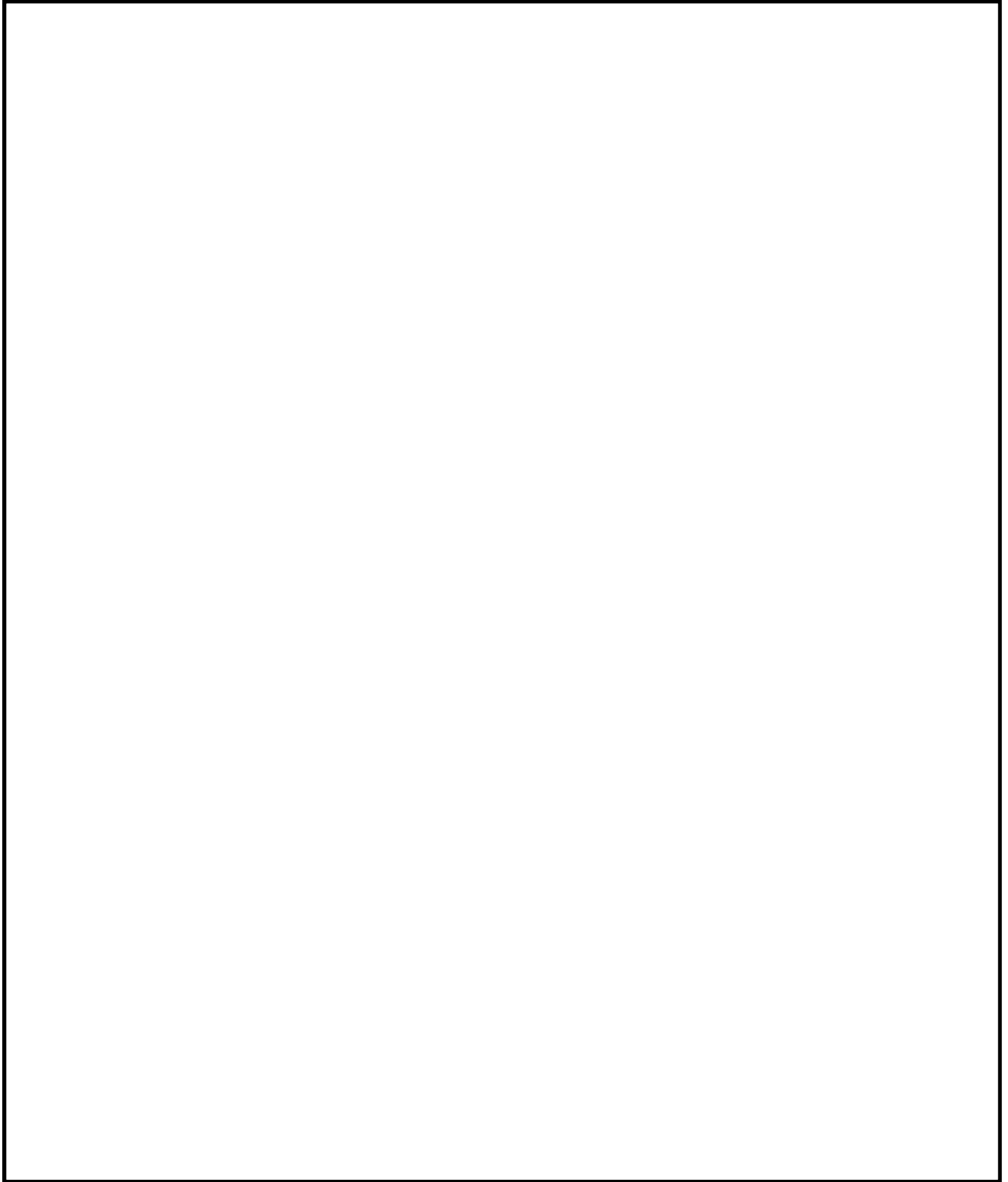
If a=5' and 2b=10', then the cord length=50 (7') ✓

If a=10' and 2b=15', then the cord length=156 (12.5') ✓



Step 2: Sketch layout

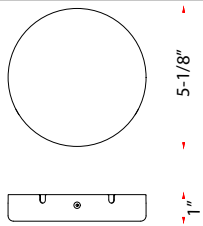
Each fixture requires two canopies (Each canopy can support a maximum of 4 fixtures)



Step 3: Select canopies and drivers (24V LED only)

1. Canopy

Each fixture requires two canopies (Each canopy can support a maximum of 4 fixtures)

Select canopy color		
_____	F63M01 A 02 - Black	
_____	F63M01 A 01 - White	

2. Remote Drivers (for 24V LED systems)

Select remote driver for LED Light Source.

Model	Driver Type
_____ A55208	60W, 24V, 120V, ELV Dimming - Supports up to 8 fixtures
_____ A55209	96W, 24V, 120V, ELV Dimming - Supports up to 12 fixtures
_____ A55210	96W, 24V, 120-277V (UNV), 0-10V Dimming - Supports up to 12 fixtures

Step 4: Compile Bill of Materials for designed system

1. Number and type of fixtures	Quantity:_____	Code:_____
2. Number and type of interior glass(es)	Glass 1: Quantity:_____	Code:_____
	Glass 2: Quantity:_____	Code:_____
	Glass 3: Quantity:_____	Code:_____
3. Number and finish of canopies (each fixture needs two canopy connections)	Quantity:_____	Code:_____
4. Number and type of driver(s)(if applicable)	Quantity:_____	Code:_____